



ace

MONTHLY TRADE UPDATE

JANUARY 2017

CONTENTS

PMS dates for 2017

Find out what the Periodic Monthly Statement dates are for next year.

Page 1

Wrap up of ACE for 2016

Missed an important event in ACE? Find out what happened in ACE this year.

Page 2

Tip of the Month

View an ACE Portal Reminder

Page 3

New and updated ACE Information Available on CBP.gov and ACE Portal

Review the latest information about ACE and the Portal

Page 4



LATEST NEWS

PMS Dates for 2017

Below are the preliminary (11th workday) and final (15th workday) dates for Periodic Monthly Statement (PMS). The latest date in which the "Preliminary" PMS can be requested to generate is the 11th workday of the month. However, some companies do request their preliminary PMS to generate before the 11th workday. "Final" is the due date for the preliminary PMS. This date is also when the Automated Commercial Environment (ACE) sends the Periodic Daily Statement (PDS) payment authorization message (PN Transaction) for the PMS to the Pay.gov website.

2017		
Month	Preliminary Statements 11th Workday	Final Statements 15th Workday
January	01/18/2017	01/24/2017
February	02/15/2017	02/22/2017
March	03/15/2017	03/21/2017
April	04/17/2017	04/21/2017
May	05/15/2017	05/19/2017
June	06/15/2017	06/21/2017
July	07/18/2017	07/24/2017
August	08/15/2017	08/21/2017
September	09/18/2017	09/22/2017
October	10/17/2017	10/23/2017
November	11/16/2017	11/22/2017
December	12/15/2017	12/21/2017

U.S. Customs and Border Protection (CBP) published Cargo Systems Messaging Service (CSMS) message [#17-000009](#) to announce the postponement of the January 14, 2017 ACE deployment. A new date will be announced in the near future.

Effective with the rescheduled date for this deployment, the final PMS will be generated to the trade community in two or three business days instead of the current one day issuance in ACE and Automated Commercial System (ACS). In ACE, the final PMS has to date been generated the day after CBP sent the PN authorization message to Pay.gov and not when the payment was transferred to CBP.

Additionally, please keep in mind that ACE Reports may not generate quickly on days when preliminary and final PMSs are generated. CBP suggests that you run and/or schedule your PMS reports during non-peak business hours and/or on days when they are not due.

For more information concerning statement processing, please review the [Statements in ACE Information Notice](#), the [Periodic Monthly Statement User Guide](#) posted on the "[ACE and Automated Systems](#)" and "[ACE Portal Training Resources](#)", pages of [CBP.gov/ACE](#). Questions concerning participation in Periodic Monthly Statement should be directed to the CBP Revenue Division. Users can send an email to periodicstatement@cbp.dhs.gov or contact the ACE Periodic Monthly Statement Payment Help Desk at 317-614-4545.

MORE ACE INFORMATION

→ Visit www.cbp.gov/ACE

→ Subscribe to [CSMS](#) for Email Updates

→ [ACE Development/Deployment Schedule](#)

→ [ACE Training](#)

2016 ACE WRAP UP

January

- CBP published a Federal Register Notice (FRN) ([80 FR 899](#)) announcing modifications and clarifications to the eBond test.
- CBP deployed the second release of ACE Deployment F capabilities to transition *AESDirect* functionality in ACE.

February

- CBP published two FRNs ([81 FR 7133](#)) and ([81 FR 10264](#)) announcing a modification to the National Customs Automation Program (NCAP) test concerning the ACE PGA Message Set regarding the Toxic Substances Control Act (TSCA) certification required by the Environmental Protection Agency (EPA) and announced that ACE is the sole CBP-Authorized Electronic Data Interchange (EDI) System for processing certain electronic entry and entry summary filings.
- CBP deployed the third release of ACE Deployment F capabilities to include functionality for the truck EDI In-transit Manifest Pilot, entries for mode of transport Mail (50), Hand Carry (60), Pipeline (70), system validations for Quota, and added automated entry type 52 and entry summary types 06, 23 and began divesting ACS.
- The ACE Reports Team retired infrequently used ACE reports and changed the legacy folder structure in ACE Reports.

March

- CBP mandated the use of ACE for filing electronic entry summaries (entry types 01, 03, 11, 23, 51, 52); and entries and entry summaries with Animal Plant Health Inspection Service (APHIS) Lacey Act and National Highway Traffic Safety Administration (NHTSA) data.
- A new capability was deployed to the ACE Portal Account allowing Account and Proxy Account Owners to reset their user's passwords.
- CBP published two FRNs ([81 FR 13399](#) and [81 FR 18634](#)) announcing a modification to the NCAP test concerning the PGA Message Set for certain data required by the EPA and the Cessation of the NCAP Test concerning the submission of certain data required by the Food and Drug Administration (FDA) using the PGA Message Set through ACE.
- The ACE Reports Team launched a new PGA Message Set Universe and expanded the existing Cargo Release Universe in ACE Reports.

April

- CBP held the 2016 Trade Support Network Plenary Session in the Washington, D.C. area.
- CBP published an FRN ([81 FR 24837](#)) to announce an NCAP test for the In-Transit Manifest Pilot program.

May

- CBP published three FRNs ([81 FR 27149](#), [81 PR 30320](#), [81 FR 32339](#)) to announce an NCAP test concerning the submission through ACE of certain import data and documents required by the U.S. Fish and Wildlife Service (FWS); that ACE is the sole CBP-Authorized EDI system for processing certain electronic entry and entry summary filings accompanied by Food and Drug Administration (FDA) Data; and that ACE is the sole CBP-Authorized EDI system for processing electronic entry and entry summary filings.
- CBP mandated the use of ACE for filing electronic entries/cargo release (entry types 01, 03, 11, 23, 51, 52) without PGA data; and electronic entries and entry summaries for entry type 06.
- CBP held the 2016 West Coast Trade Symposium in the Phoenix, AZ area.
- CBP deployed the fourth release of ACE Deployment F capabilities to include functionality and system validations to support the processing of quota, warehouse, withdrawals entry and entry summaries in ACE.

June

- CBP mandated the use of ACE for filing electronic entries and entry summaries with FDA data.
- The ACE Reports Team launched two new cargo release reports in the ACE Portal and a series of ACE Reports training videos to CBP.gov .

July

- CBP mandated the use of ACE for filing electronic entries and corresponding entry summaries for remaining entry types (02, 07, 12, 21, 22, 31, 32, 34, 38) and functionality for filing remaining electronic PGA data in ACE.
- CBP published an FRN ([81 FR 49685](#)) to announce that the ACE Protest Module is the sole CBP-Authorized method for filing electronic protests.

August

- CBP deployed and mandated the first release of ACE Deployment G capabilities to include functionality and system validations for the processing of Protest transactions in ACE.
- CBP hosted three webinars for software developers and programmers that focused on [Reconciliation](#), [Drawback](#) and [Liquidation](#) and three webinars for trade that focused on demonstrating [Drawback](#), [Protest](#), and [Reconciliation](#) in ACE.
- CBP published three FRNs ([81 FR 52453](#), [81 FR 53497](#), [81 FR 59644](#)) to announce a modification to a NCAP test concerning ACE Portal accounts; to establish the Protest Filer Account and clarify the terms and conditions for account access applicable to all ACE Portal Accounts; an NCAP test concerning electronic filing of Protests in ACE; and ACE as the sole CBP-Authorized EDI system for processing electronic drawback and duty deferral entry and entry summary filings.

September

- The ACE Reports Team launched a new Protest Filer Workspace and new Protest Filer reports.
- CBP published an FRN ([81 FR 62515](#)) to announce the conclusion of the NCAP test concerning the submission of data required by the Food Safety and Inspection Service (FSIS) in ACE.

October

- CBP published two FRNs ([81 FR 68023](#), [81 FR 71019](#)) to announce a delay of the effective date for ACE to become the sole CBP-Authorized EDI system for processing electronic drawback and duty deferral entry and entry summary filings; and a notice of proposed rulemaking on the electronic notice of liquidation.

November

- CBP launched the ACE Availability Dashboard tool on CBP.gov.


December

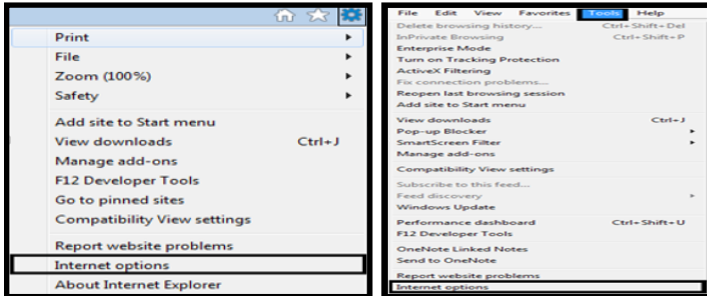
- CBP published five FRNs ([81 FR 89486](#), [81 FR 89482](#), [81 FR 89375](#), [81 FR 94974](#), [81 FR 94980](#)) to announce the modification of the NCAP test regarding reconciliation and the transition of the test from ACS to ACE, and the effective date for ACE to become the sole CBP-Authorized EDI system for processing electronic drawback and duty deferral entry and entry summary filings; a modification and clarification of the NCAP test regarding Post Summary Corrections (PSC) and Periodic Monthly Statements; a final rule on the electronic notice of liquidation; a final rule on importations of certain vehicles and engines subject to Federal antipollution emission standards; and a final rule on the revisions of the TSCA chemical substance import certification process.
- CBP hosted three webinars (sessions [1,2,3](#)) on Reconciliation.
- CBP held the 2016 East Coast Trade Symposium in the Arlington, VA area.

TOP OF THE MONTH

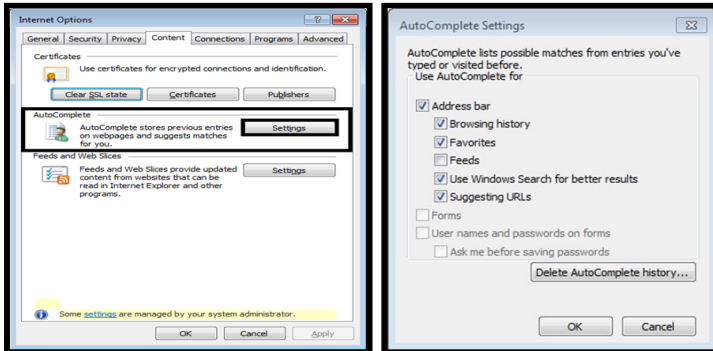
ACE Portal Reminder : Use of the Internet Browser's AutoComplete Feature for Passwords

CBP has noticed a growing number of users who have activated their internet browser's AutoComplete feature to remember passwords. Since ACE Secure Data Portal security policy requires users to change their passwords every 90 days, users who enable this feature may encounter problems while changing or resetting their passwords. To prevent issues, CBP is recommending that all ACE Portal users disable the AutoComplete feature for "Form Data" and "Passwords" in their internet browsers. Below are instructions on how to disable the AutoComplete feature in the Internet Explorer Browser:

1. Launch the **Internet Explorer** browser
2. Open **Internet Options** by either clicking on
 - Tools icon  and then select **Internet options**, or
 - **Tools** from the menu bar, and then select **Internet options**

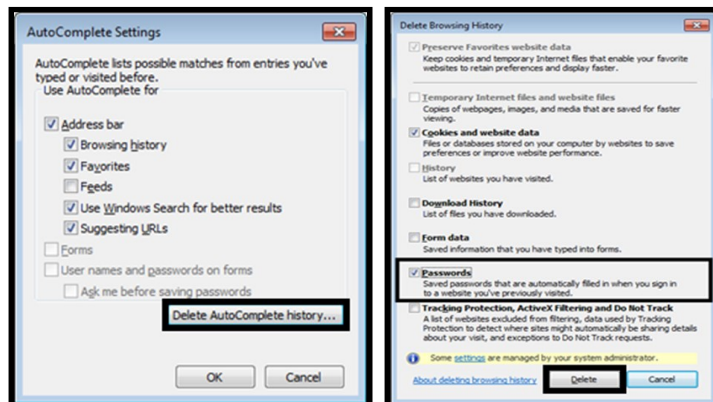


3. Once the **Internet Options** window displays, select the **Content** tab
4. From the **Content** tab, select the **Settings** button from the **AutoComplete** section
5. After the **AutoComplete Settings** screen displays, please uncheck the box for **User names and password on forms**



To delete AutoComplete history, please follow these simple steps below:

1. Launch Internet Explorer, select the **Tools** icon or menu bar button, and then select **Internet options**
2. From the **Content** tab, click on the **Settings** button from the AutoComplete section, and then select **Delete AutoComplete history**
3. In the Delete Browsing History dialog box, select **Form Data** and **Passwords**. To clear web address entries, you must select the **History** check box, which also deletes your browsing history
4. Select **Delete** to clear your AutoComplete history. Select **OK**, and then select **OK** again



Please note that some information is greyed out in the above screenshots. This is due to permissions granted to your PC by a system administrator and will vary per user and their company or personal security policies.

The Microsoft Windows Operating System and Internet Explorer Web Browser are the supported platforms to access the ACE Secure Data Portal. While other browsers and operating systems may work, support for them is not provided through the CBP Technology Service Desk.

More information about the ACE Secure Data Portal can be found at the following URL: <https://www.cbp.gov/trade/automated/getting-started/using-ace-secure-data-portal>

UPDATED ACE INFORMATION POSTED ON CBP.GOV

CBP has updated ACE information posted on CBP.gov. The updated ACE information includes:



The [ACE Development and Deployment Schedule](#) provides details on when upcoming ACE capabilities will be developed and deployed into the ACE production environment.



The [ACE Mandatory Use Dates](#) page provides details concerning the transition to ACE, including an overview of each of the mandatory dates and details of past and pending transition dates.



The [ACE Support](#) page provides information on how to subscribe to the CSMS, a hyperlink to the ACE Frequently Asked Questions (FAQs) page, telephone numbers for the ACE Support Teams, and email addresses where trade can submit questions to our Subject-Matter Experts (SMEs) at CBP and Census.

To access the new and updated ACE information, please visit the "[ACE and Automated Systems](#)" and "[ACE Automated Broker Interface \(ABI\) and CBP and Trade Automated Interface Requirements \(CATAIR\)](#)" pages of [CBP.gov/ACE](#). You may also click on the hyperlinks provided.

ACE PORTAL INFORMATION

New ACE Reports Dictionary for Trade Now Available

The ACE Reports team has created its first version of the revamped ACE Reports Data Dictionary to provide trade users with a comprehensive inventory of data universes and data objects available in ACE Reports. This reference guide is designed to enhance the understanding of ACE Reports by clearly identifying and defining all data universes and data objects available to trade users that have been deployed in ACE Reports since 2015. All data objects are defined in a simple two column table that includes the object name and object definition. The document is organized alphabetically by subject area (e.g., AD/CVD or Cargo Release) and data objects are then sorted in ascending alphabetical order within each subject area.

Please note: The ACE Reports Data Dictionary does not provide a list of each individual public "canned" report available to users; this information is available in the ACE Reports Catalog. The data dictionary is a living document that will grow and evolve over time as new capabilities are deployed in ACE Reports. Each update will be marked with the month and year of issuance to allow for quick and easy identification of the most recently published document.

The document is available in the ACE Reports module, by clicking the **View ACE Reports Training Resources** button from the Home tab and then selecting the **ACE Reports Data Dictionary** option.

Reminder: Authorized Data Extracts

The ACE Reports Team recently announced that the Authorized Data Extracts (ADE) feature in the ACE Secure Data Portal will be retired, effective with the deployment of ACE Post Release capabilities. Upon the effective date, all reporting capabilities will be provided by ACE Reports.

For more information about the ACE Reports Dictionary or running ACE Reports, please review our series of ACE Reports Quick Training Videos on the "[ACE Reports Training and User Guides](#)" page of [CBP.gov/ACE](#) for step-by-step instructions on getting started with ACE Reports.

FREQUENTLY ASKED QUESTION

Which department can the trade community contact at CBP to inquire on a refund payment or lost checks?

The trade community may contact the CBP Revenue Division's Refunds/Replacement Check Hotline at 317-298-1200 X 4015 to inquire on refund payments or lost checks.