

Automated Commercial Environment

Document Image System (DIS) Implementation Guide

February 16, 2018



U.S. Customs and
Border Protection



Be Advised:

A filer who transmits data or information through any electronic means to CBP certifies, by the act of transmitting such data or information, that the data or information transmitted is true and correct to the best of the filer’s knowledge and belief. The filer also declares that all statements in an electronically transmitted entry, entry summary, invoice, claim, other filing, and all other information or data filed with the entry are true and correct to the best of the filer’s knowledge and belief, and that the filer will produce at once any data or information showing that the statements are not true and correct.

Contents

Table of Changes	5
Preface	13
XML Examples	13
XSD Files – XML Schema Definition	13
Record Layout Key	14
Introduction	15
DIS Technical Interface Description	17
Input	17
Output	17
Communications Options	18
A. Existing MQ.....	18
B. Secure FTP (sFTP)	18
C. Secure Web Services	18
Inbound Settings	19
A. MQ Settings	19
B. sFTP Settings	19
C. Web Services Settings	19
Web Services – Additional Information	19
Additional Guidelines	19
Web Services Security Implementation	20
DIS High Level Process Flow	21
DIS XML Message Construction	21
Basic Level Message Construction Example	22

MessageEnvelope	23
MessageHeader	25
MessageBody	27
DocumentSubmissionPackage – (Input Only)	28
Message Validation Response – (Output Only)	34
Document Review Response (Status Notification - Output Only)	38
APPENDIX A: List of Supported Documents	41
Agricultural Marketing Service (AMS)	42
Animal and Plant Health Inspection Service (APHIS)	43
Bureau of Alcohol, Tobacco, Firearms and Explosives (ATF)	47
Department of Commerce Bureau of the Census (CBC)	48
Centers for Disease Control and Prevention (CDC)	48
Consumer Products Safety Commission (CPSC)	49
Defense Contract Management Agency (DCMA)	49
Drug Enforcement Administration (DEA)	49
Directorate of Defense Trade Controls (DDTC)	50
Department of Commerce Enforcement and Compliance (E&C)	51
Environmental Protection Agency (EPA)	54
Foreign Agricultural Service (FAS)	56
Food Safety and Inspection Service (FSIS)	56
U.S. Department of the Interior, Fish & Wildlife Service (FWS)	57
Department of Treasury, Internal Revenue Service (IRS)	58
National Highway Traffic Safety Administration (NHTSA)	59
National Marine Fisheries Service (NMFS)	60
Office of Marine Conservation (OMC)	62
Office of Textiles and Apparel (OTEXA)	62
Office of U.S. Trade Representative (TRP)	63
Alcohol and Tobacco Tax and Trade (TTB)	63
Common Documents NOT Owned by any Particular Agency (COM)	64
Customs and Border Protection (CBP)	66
APPENDIX B: General Guidelines for Documents Submitted to DIS via Email	79
APPENDIX C: Guidelines for Vessel Documents Submitted to DIS via Email	81



Table of Changes

Revision Number	Date of Change	Brief Description of Change
28	February 16, 2018	<ul style="list-style-type: none"> Removed CBP137 Doc code from IG (NAFTA Coding Sheet) Updated the 'CBP139' doc code description to say 'Drawback 1313(c) Documents and Certification(s)'
27	December 6, 2017	<ul style="list-style-type: none"> Appendix B- Updated FTZ Admission Number Transaction Identifier from ADMSN_NBR to ADMISSION_NBR Appendix A- Added Comments for CBP Document CBP122 Appendix A- Removed Expiration Date Metadata requirement for Common Documents COM09 and COM10 Appendix A- Added two new Common Documents COM14 and COM15 Appendix A- Updated Description for Common Document COM11
26	October 23, 2017	<ul style="list-style-type: none"> Added FTZ Admission Number as a valid Transaction Identifier that can be associated with a submitted document. This has been noted in Appendix B for Email submissions. Admission Number can also be used in DIS XML submissions. This is noted in the XSD in the trade Transactions section. The XSD does not change since this transaction type was already present in the XSD.
25	July 17, 2017	<ul style="list-style-type: none"> Clarified language throughout document. Impactful changes are specifically identified below. Removed references to 'Phase 1' in the DIS Process Flow. In the DocumentSubmissionPackage section, updated the Parent for CBPrequest and DocumentData, from <i>TradeTransaction</i>, to <i>DocumentSubmissionPackage</i>; Updated Note 4. Updated the URL for the XML schema and examples, wherever it appears.



Revision Number	Date of Change	Brief Description of Change
		<ul style="list-style-type: none"> • For all Alcohol and Tobacco Tax and Trade (TTB) forms, removed text that indicated the forms were only for non-ABI submissions. • For DEA, removed forms DEA01, DEA02, DEA03 and DEA04 at the request of the PGA. • Updated metadata/comments language for all DEA forms. • Removed COM12-COFRA Certificate of Financial Responsibility (alternate) from document list. • Updated Appendix C: Guidelines for Vessel Documents via Email (removed IMO_NBR for email subject line; removed PORT_CD, VSL_VYG_NBR, SGMT_NBR, VSL_INSP_ID_NBR from body; updated note 3) • Updated language for effectiveness for Revision Number 24 for documents to support Drawback and Reconciliation. • Data element MessageType updated to reflect DocumentReviewResponse as a valid option. • Added Form for CPS <ul style="list-style-type: none"> ○ CPS_CERTIFICATE_OF_COMPLIANCE (doc code CPS01) • Added Forms to support Drawback (effective at time of ACE Drawback deployment): <ul style="list-style-type: none"> ○ Drawback CID Supporting Document (doc code CBP135) ○ Drawback CID Application (doc code CBP136) ○ Drawback NAFTA Coding Sheet (doc code CBP137) ○ Drawback OTW Approval Letter (doc code CBP138) ○ Drawback 1313I Document (doc code CBP139)
24	January 14, 2017	<ul style="list-style-type: none"> • Deleted Forms for ATF (effective January 14, 2017): <ul style="list-style-type: none"> ○ ATF_FORM_6_5330_3A (doc code ATF01) ○ ATF_FORM_6A_5330_3C (doc code ATF02) ○ ATF_FEDERAL_FIREARMS (doc code ATF03) ○ ATF_FEDERAL_EXPLOSIVES (doc code ATF04) • Deleted Forms for CDC (effective January 14, 2017): <ul style="list-style-type: none"> ○ CDC_IMPORT_HUMAN_REMAINS (doc code CDC11)

Revision Number	Date of Change	Brief Description of Change
		<ul style="list-style-type: none"> ○ CDC_DEATH_CERT (doc code CDC12) ● Added Forms to support Drawback (effective at time of ACE Drawback deployment): <ul style="list-style-type: none"> ○ IRS Form 720 (doc code IRS01) ○ IRS Form 720x (doc code IRS02) ○ IRS Form 6627 (doc code IRS03) ○ Drawback Accounts Payable (doc code CBP110) ○ Drawback Receiving Reports (doc code CBP111) ○ Delivery Records (doc code CBP112) ○ Drawback Inventory Records (doc code CBP113) ○ Drawback Inventory Control Records (doc code CBP114) ○ Drawback Inventory Turnover Records (doc code CBP115) ○ Drawback Manufacturing Records (doc code CBP116) ○ Drawback Sales Order/Contract (doc code CBP117) ○ Drawback Finished Goods Inventory (doc code CBP118) ○ Drawback Export Invoice (doc code CBP119) ○ Drawback Accounts Receivable (doc code CBP120) ○ Drawback Production Exhibit (doc code CBP121) ○ CBPF 214 Application for Foreign Trade Zone Admission and/or Status Designation Continuation Sheet (doc code CBP122) ○ Drawback 1313(p) Certification (doc code CBP123) ○ CBPF 7514 Drawback Notice (Lading/FTZ Transfer) or Master Declaration (doc code CBP124) ○ Drawback 1313(b)(p) Certification (doc code CBP125) ○ Drawback Oil Spill Certification (doc code CBP126) ○ Drawback 5062I Certification (doc code CBP127) ○ CBPF 7553 Notice of Intent to Export or Destroy for Purposes of Drawback (NOI) (doc code CBP128) ○ Drawback Proof of Exports (doc code CBP129) ○ Drawback Business Records – Lab Report (doc code CBP130)

Revision Number	Date of Change	Brief Description of Change
		<ul style="list-style-type: none"> ○ Drawback Business Records – Certificate of Analysis (doc code CBP131) ○ Drawback Export Waiver / Endorsement Waiver (doc code CBP132) ○ Drawback CID Approval Letter from HQ or Port (doc code CBP133) ● Added Form to support Reconciliation (effective at time of ACE Reconciliation deployment) <ul style="list-style-type: none"> ○ Royalty Agreement (doc code CBP134) ● Added metadata to support submission of vessel documents (effective January 14, 2017): <ul style="list-style-type: none"> ○ CERTIFICATE_NUMBER=Mandatory ○ ISSUE_DATE=Mandatory ○ EXPIRATION_DATE=Mandatory ○ GROSS_TONNAGE= Conditional (Required when submitting Tonnage Certificate) ○ NET_TONNAGE= Conditional (Required when submitting Tonnage Certificate)
23	December 31, 2016	<ul style="list-style-type: none"> ● Deleted Form (effective December 31, 2016): <ul style="list-style-type: none"> ○ Kimberley Process Certificate (doc code CBP44) ● Added Forms (effective December 31, 2016): <ul style="list-style-type: none"> ○ CBC Kimberley Process Import Certificate (doc code CBC01) ○ CBC Kimberley Process Export Certificate (doc code CBC02)
22	October 4, 2016	<ul style="list-style-type: none"> ● Deleted CBP Form (effective October 4, 2016): <ul style="list-style-type: none"> ○ NMF Highly Migratory Species International Trade Permit (doc code NMF07) ○ NMF AMLR Dealer Permit (doc code NMF21) ○ CBPF_3461 (doc code CBP109) ● Updated Message Header Message ID length to ‘50AN’ (IG required updating. No system change was made.)
21	August 15, 2016	<ul style="list-style-type: none"> ● Deleted CBP Form (effective August 27, 2016): <ul style="list-style-type: none"> ○ Protest (doc code CBP31) ○ 520D (doc code CBP34) ● Added new PGA forms (effective August 27, 2016): <ul style="list-style-type: none"> ○ CDC Nonhuman Primate Notification ○ ECO AD/CVD Organic Pasta from Italy
20	July 23, 2016	<ul style="list-style-type: none"> ● Deleted CBP Form (effective August 20, 2016): <ul style="list-style-type: none"> ○ STB (Type 1)
19	July 7, 2016	<ul style="list-style-type: none"> ● Added new PGA forms to be implemented July 23, 2016: <ul style="list-style-type: none"> ○ FAS Certificate of Quota Eligibility



Revision Number	Date of Change	Brief Description of Change
		<ul style="list-style-type: none"> ○ FAS Specialty Sugar Certificate ○ FAS General Note 15c Letter of Exemption
18	May 13, 2016	<ul style="list-style-type: none"> ● New transaction added to IG: DocumentReviewResponse. This is a status notification output only to the trade partner. It is sent when a CBPO rejects the DIS submission back to the trade partner after review. ● Communications Options section updated to remove statements about ISA requirements. An existing ISA covers any type of setup (MQ, sFTP or Web Services).
17	May 3, 2016	<ul style="list-style-type: none"> ● Added new PGA forms to be implemented July 23, 2016: <ul style="list-style-type: none"> ○ OTX Dominican Republic Earned Import Allowance Program Import Approval Certificate ○ OTX Haiti Earned Import Allowance Program Import Approval Certificate
16	April 25, 2016	<ul style="list-style-type: none"> ● Added new PGA forms: <ul style="list-style-type: none"> ○ FWS Transportation Documents ○ FWS Transaction Documents ○ FWS Commodity Specific Documents ○ FWS CITES Foreign Export Permit ○ FWS CITES Foreign Re-Export Certificate ○ FWS CITES Foreign 'Other' Certificate ○ FWS CITES Import Permit ○ FWS Declaration for the Importation and Exportation of Fish or Wildlife (Form 3-177) ○ FWS Wildlife Export and Re-Export Permits Issued by Foreign Government ○ FWS Endangered Species Act Import Permit ○ FWS Marine Mammal Protection Act Import Permit ○ FWS Wild Bird Conservation Act Import Permit ○ FWS Migratory Bird Treaty Act Import Permit ○ FWS Injurious Species Import Permit ○ FWS Bald and Golden Eagle Protection Act Import Permit ○ NMF AMLR Dealer Permit ○ NMF Dissostichus Catch Document – CCAMLR ○ OMC Shrimp Exporter's/Importer's Declaration DS-2013
15	March 25, 2016	<ul style="list-style-type: none"> ● XML Examples: added hyperlink ● Record Layout Key: date definition updated ● Communication Options: updated ISA language for Secure FTP and Secure Web Services



Revision Number	Date of Change	Brief Description of Change
		<ul style="list-style-type: none"> • Message Envelope: updated examples • Document Submission Package (Input Only): <ul style="list-style-type: none"> ○ ‘CBPRequestDate’ data field changed from Mandatory to Optional ○ ‘DocumentDescription’ data field changed from Mandatory to Optional • Added new PGA forms: <ul style="list-style-type: none"> ○ DEA Permit to Import ○ DEA Controlled Substances Import/Export Declaration ○ DEA Import/Export Declaration for List I and List II Chemicals ○ DEA Import Declaration for Ephedrine, Pseudoephedrine and Phenylpropanolamine ○ TRP Certificate Inward Processing Regime (IPR) Exports of Pasta to the USA ○ TRP Certificate for the Export of Pasta to the USA • Deleted PGA forms: <ul style="list-style-type: none"> ○ APH Lacey Act Data ○ APH Lacey Act Supplemental Form ○ APH Foreign Government Sanitary Certificate (Veterinary Health Certificate) ○ APH U.S. Permit to Import (Includes Transit) ○ APH Agreement of Pet Bird Owner (U.S. Origin Returning) ○ CDC Permit Exemption Letter ○ Notice to Owners and Importers of Dogs (CDC Form 75.37) ○ CDC Record of Sickness or Death of Dogs and Cats • Added new common forms: <ul style="list-style-type: none"> ○ Safety Construction Certificate ○ Safety Equipment Certificate ○ Radio Certificate ○ Dangerous Goods Compliance ○ Ship Security ○ Safety Management Certificate ○ Load Line Certificate ○ Registry/Certificate of Nationality ○ Tonnage Certificate ○ Certificate of Financial Responsibility ○ Certificate of Financial Responsibility (Alternate) ○ Continuous Synopsis Record



Revision Number	Date of Change	Brief Description of Change
		<ul style="list-style-type: none"> Added Internal Transaction Number (ITN) as a transaction type for Appendix B Added Appendix C: Guidelines for Vessel Documents Submitted to DIS via Email Added Appendix D: XSD Enumerated Value Definitions
14	October 30, 2015	<ul style="list-style-type: none"> Added new form: <ul style="list-style-type: none"> CBP Form 3461 to Appendix A
13	October 7, 2015	<ul style="list-style-type: none"> Corrected Document Label Value for ECO15 Corrected Document Label Value for CBP87 Corrected Document Label Value for TTB05 Added directions for identifying multiple agencies when sending documents via email
12	July 27, 2015	Applied new technical documentation template. No content changes.
11	July 6, 2015	Revised document to follow ACE CATAIR format.
10	April 1, 2014	<p>Changed the DIS destination IP to 173.255.63.75 for sFTP and Web Services. Removed T&E (7512) Number data element from the 'APHIS Transit Permit' document.</p> <p>Added four new forms:</p> <ul style="list-style-type: none"> - CDC Importation Permission Letter - CDC Form 0728 - CDC Import Permit Exemption Letter - TTB Champagne Certificate of Origin.
9	Feb. 22, 2014	Updated this document to reflect the new Message Schema.
8	Feb 23, 2012	Updated the following sections to include the FSIS documents. Added a note indicating that only documents explicitly listed in the Federal Register should be submitted via DIS.
7	Dec. 17, 2011	Updated various sections to include all system-supported documents. Clarified definitions of Document Sender and Document Owner.
6	Sept. 19, 2011	Updated documentation to include APTL documents.
5	Feb. 21, 2011	Highlighted documents supported in current version of DIS
4	Dec. 23, 2010	Updated narrative text
6	Nov. 8, 2010	Updated Schema



Revision Number	Date of Change	Brief Description of Change
2	Oct. 7, 2010	Updated Schema
1	Oct. 1, 2010	Initial Version/Release



Preface

This document provides guidance on the methods by which documents and images may be transmitted electronically to CBP by Trade via the Document Imaging System (DIS). This document is not intended to teach XML programming. If unfamiliar with XML programming, please consult an advisor. CBP does not provide specific programming advice.

XML Examples

Full XML transaction examples are available at <https://www.cbp.gov/document/guidance/ace-dis-xml-schema> in the Supporting Documents tab. The XML examples are inside the DIS XSD in the XML Examples folder. Look them over for an initial visual understanding of the XML format. Read this Implementation Guide while using the examples as a visual resource.

XSD Files – XML Schema Definition

Find the XSD Schema Definition files at <https://www.cbp.gov/document/guidance/ace-dis-xml-schema> in the Supporting Documents tab. These files should be opened with a valid XML Editor. They should not be viewed with a simple text editor.

XSD files provide data element syntax, definitions, declarations. The XML programmer can avoid initial errors by using tools such as JAXB rather than typing them by hand.

Data elements in CommonData.xsd appear in all DIS transactions – input and output. Data elements in the other .xsd files are specific to one transaction type.

Transmitters can validate the XML transaction against the schema to check for errors prior to sending the transaction to CBP.

Enumerated Value Definitions can be found in Appendix D at the end of this document.

Record Layout Key

The following key describes the columns of the record layout definitions that follow.

Data Element: Contains the name of the reported data field.

Length: Indicates the minimum and maximum, allowed length of the reported data element.

Type: Defines the data type accepted for the data element. The Type definition represents the accepted data types to be used in **all** filing scenarios. Valid data types are as follows:

A = Alphabetic Data. Consists of characters A through Z (uppercase ONLY).

N = Numeric Data Only. Consists of numerals 0 through 9.

AN = Alphanumeric Data. Consists of characters A through Z (uppercase ONLY), numerals 0 through 9, and space.

D = Date – Must be in UTC format.

X = Special Data. Consists of characters A through Z (uppercase ONLY), numerals 0 through 9, space, and any other character found on a standard keyboard. The following characters are accepted:

! @ # \$ % ^ & * () - _ = + [{] \ | ; : ' " , < . > / ? ` ~ ¢

Designation: Indicates the reporting requirement as follows:

M = Mandatory. A value conforming to the listed class is required in all filing scenarios.

C = Conditional. A value conforming to the listed class may or may not be required for a particular filing scenario. The usage notes will describe the specific cases in which the data element is required or not allowed to be reported.

O = Optional. A value conforming to the listed class will be conditionally accepted if provided. An optional data element may be subject to validation, however.

Description: Defines the data element and provides a further description of how it is to be reported. May include a list of acceptable values, an exception or further specification of the data class, and/or various rules regarding format, justification, and truncation.

Designation: Indicates the reporting requirement as follows:

M = Mandatory. A value conforming to the listed class is required in all filing scenarios.

C = Conditional. A value conforming to the listed class may or may not be required for a particular filing scenario. The usage notes will describe the specific cases in which the data element is required or not allowed to be reported.

O = Optional. A value conforming to the listed class will be conditionally accepted if provided. An optional data element may be subject to validation, however.

Introduction

DIS allows participating Trade Partners to submit document Images and associated descriptive metadata to CBP electronically. Messages may be transmitted in XML format using either secure web services, FTP or MQ or in certain cases via email as identified later in this document. Upon successful transmission, the documents are securely stored and made available for review by CBP and Participating Government Agencies (PGAs). Documents submitted via DIS are in lieu of paper documents.

DIS presently provides the following document image submission and management capabilities:

- Allows Trade Partners to submit document images and associated descriptive metadata intended for CBP and PGAs in an automated manner
- Stores all submitted documents in a secure centralized CBP database and maintains associations with transactions such as Entries and Bills and other related descriptive data
- Allows authorized CBP and PGA users to retrieve, view, review, and annotate documents via a web based user interface
- Provides security, authorization and auditing capabilities
- Provides validation error results or receipt notification back to trade partners for each submitted document transmission
- Provides capabilities for CBP Client Representatives to view raw received messages and audit information to assist trade partners in troubleshooting.



DIS Technical Interface Description

The DIS technical interface provides Trade Partners with the capability to submit documents to CBP electronically along with any required metadata. Trade Partners will receive a system response to each submission. Trade Partners will also receive an unsolicited review status response only when a document is rejected by a CBP employee.

Documents submitted via DIS are electronic 'text' embedded in an XML message that get programmatically converted to actual documents on the receiving end. Multiple document and image formats are supported. The images are embedded in the XML message along with distinct metadata fields that describe the document. All data elements are described in detail in the XML field definitions included in this implementation guide.

Input

The XML message payload containing document images and any associated metadata remains the same for all three communication protocols. Note that the payload is wrapped in a SOAP Envelope when submitted to the DIS SOAP Web Service. CBP supports three different communication protocols for DIS XML submission:

- **Existing EDI MQ Interface**
- **Secure FTP**
- **Secure Web Services (Requires SOAP Envelope)**

Output

All DIS responses are sent back to Trade in XML format **via existing EDI MQ** irrespective of how the DIS transaction was submitted to CBP.

Communications Options

Documents may be submitted to DIS as an XML payload to the below three technical interfaces or in certain cases via email sent to specific mailboxes as noted in later sections in this ICD.

The XML message can be submitted to the DIS Gateway via three supported interfaces:

- a. Existing EDI MQ Interface
- b. Secure FTP (sFTP)
- c. Secure Web Services

U. Existing MQ

- XML input submitted via MQ and output returned via MQ.
- Common Input queue for inbound messages: [ATS.DIS.MSG.INBOUND](#)
- Specific Output queue for outbound messages: [ATS.DIS.PPPFFFF.Outbound](#)
(PPPP = Four-digit Port Code. FFF = Three-character Filer Code)
- Max message size: 100 MB

B. Secure FTP (sFTP)

- XML input submitted via sFTP. Output returned via MQ.
- Universal UserID and Password used by all trade partners.
- Max message size: 100 MB.

C. Secure Web Services

- XML input submitted via Web Services. Output returned via MQ.
- XML message structure requires a SOAP envelope.
- Universal UserID and Password used by all trade partners.
- Max message size: 100 MB.

NOTE:

All asynchronous responses back to the trade are sent in XML format via EDI MQ regardless of the technical interface via which the XML payloads were submitted to CBP.

Web Services will also return a synchronous response immediately upon document submission.

Responses to email submissions are sent back to trade via email to the address specified in the RETURN_EMAIL_ADDRESS element in the email body or to the address the email was received from if RETURN_EMAIL_ADDRESS element was not specified.

Inbound Settings

U. MQ Settings

DIS Inbound Queue Name: [ATS.DIS.MSG.INBOUND](#)

NOTE: These are the same settings as with any other application running thru MQ

Interface	IP	Port	Queue Manager
CERT	167.144.89.231	1531	QGC1
PROD	167.144.89.228	1530	QGP2

B. sFTP Settings

Interface	DIS Destination IP	Port	URL / Server Name
CERT	216.81.87.70	2923	fnwg-dp- internet05.cbp.dhs.gov
PROD	216.81.87.65	2023	dp-int-exvip1.cbp.dhs.gov

C. Web Services Settings

NOTE: *For Web Services, URL / Server Name is required.*

Interface	DIS Destination IP	Port	URL / Server Name
CERT	216.81.87.70	2933	fnwg-dp- internet05.cbp.dhs.gov
PROD	216.81.87.65	2033	dp-int-exvip1.cbp.dhs.gov

Web Services – Additional Information

Additional Guidelines

- DIS Web Services implements SSL, Client IP authentication, login credentials and security tokens as layers of security checks.
- DIS Web Services implements the SOAP protocol.
- The DIS XML Message input should be embedded in the SOAP body of the SOAP envelope.



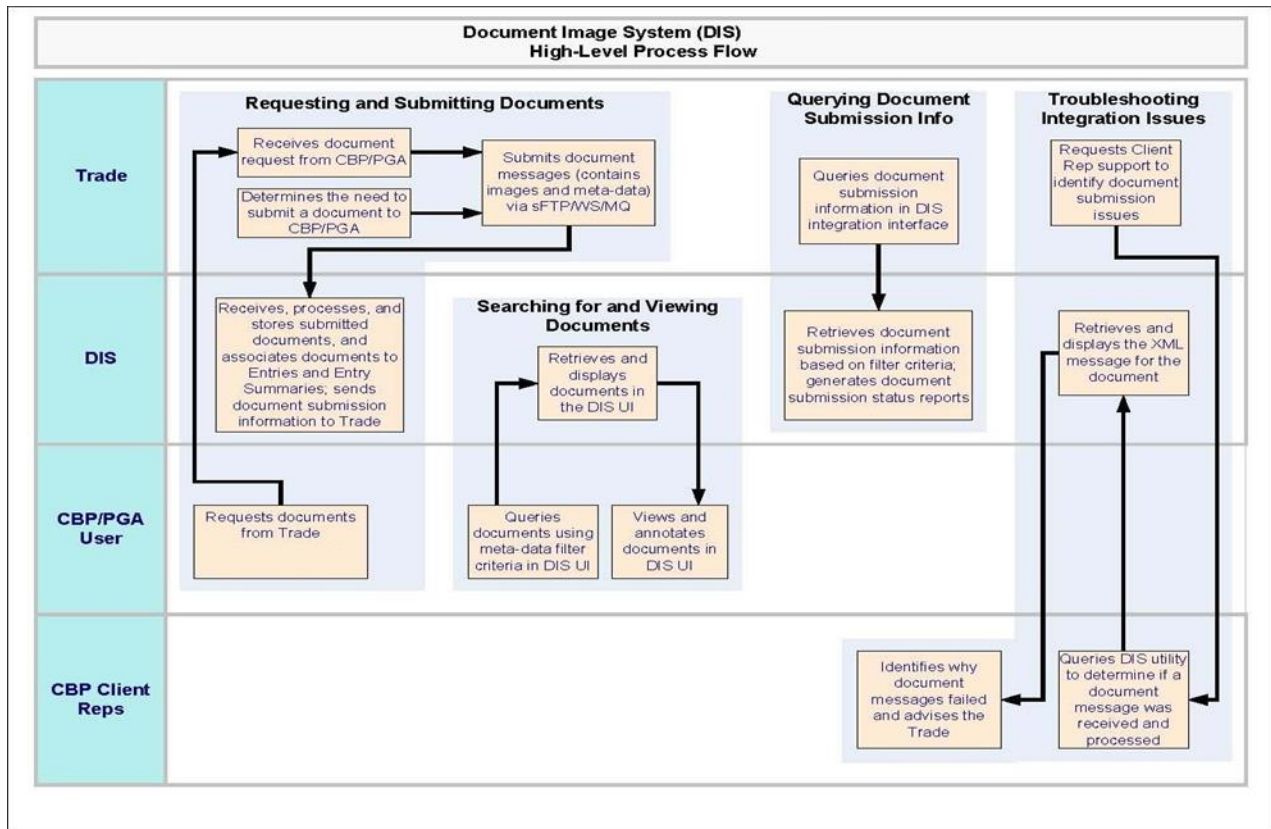
- Certain SOAP headers may be defined to facilitate routing and security.
- The DIS XML Message *within* the SOAP envelope should not have the XML instruction **<?xml version="1.0" encoding="utf-8" ?>** since the SOAP envelope is itself an XML construct.
- The xml command line should be the first line of the SOAP message.

Web Services Security Implementation

- HTTPS protocol is used.
- Login and Password authentication: A User ID and Password is provided by CBP.
- Login credentials are used to obtain a valid Security Token with the getSecurityToken() function.
- Valid security token is used to make subsequent calls to other operations in the Web Service.
- Security token expires after a certain amount of time and must be re-obtained dynamically from the Web Service.



DIS High Level Process Flow



DIS XML Message Construction

DIS XML message construction consists of four main components:

- MessageEnvelope
- MessageHeader
- MessageBody
- Submission Package (Input); or Response (Output)

Only one package may be submitted in a single DIS transaction. Multiple *documents* may be referenced from within the submission package although a single document submission at a time is recommended. Examples of DIS XML transactions (Input and Output) can be at <https://www.cbp.gov/document/guidance/ace-dis-xml-schema> in the Supporting Documents tab.

Examples of a submission package, a response and a status notification are:

- **DocumentSubmissionPackage (Input)**
- **MessageValidationResponse (Output)**
- **DocumentReviewResponse (Status Notification Output Only)**

Basic Level Message Construction Example

The example below demonstrates the four main parts if a DIS Submission

```
<DIS :MessageEnvelope xmlns :DIS= »http ://cbp.dhs.gov/DIS » ... >

  <DIS:MessageHeader>
    ... MessageHeader data elements go here
  </DIS:MessageHeader>

  <DIS:MessageBody>
    <DIS:DocumentSubmissionPackage>
      ... DocumentSubmissionPackage data elements go here
    </DIS:DocumentSubmissionPackage >
  </DIS:MessageBody>

</DIS:MessageEnvelope>
```



MessageEnvelope

The MessageEnvelope element is the outermost element. All other XML elements are contained within the Message Envelope as child elements. MessageEnvelope applies to all transaction types.

Designation: Mandatory

Max Occurrences: One

Parent Element: None

Example #1 MessageEnvelope – Input:

```
<DIS:MessageEnvelope xmlns:DIS="http://cbp.dhs.gov/DIS"
xmlns:xsd="http://www.w3.org/2001/XMLSchema"
xmlns:xsi="http://www.w3.org/2001/XMLSchema-instance">

    ... all other XML Code

</DIS:MessageEnvelope>
```

Example #2 MessageEnvelope – Input:

```
<DIS:MessageEnvelope xmlns:DIS="http://cbp.dhs.gov/DIS"
xmlns:xsi="http://www.w3.org/2001/XMLSchema-instance"
xsi:schemaLocation="http://cbp.dhs.gov/DIS ../MessageEnvelope.xsd">

    ... all other XML Code

</DIS:MessageEnvelope>
```

Note: Multiple declarations can be made in the Message Envelope. Example #2 contains a declaration for the schema location. In this case the XML editor would look for the Schema XSD files one folder up from the DIS XML file (`xsi:schemaLocation=http://cbp.dhs.gov/DIS ../MessageEnvelope.xsd`). This makes it easy to validate the DIS transaction against the Schema.

Example MessageEnvelope - Response/Output:

The MessageEnvelope will always be returned like this regardless of how it is submitted on the input.

```
<MessageEnvelope xmlns="http://cbp.dhs.gov/DIS"  
xmlns:DIS="http://cbp.dhs.gov/DIS"  
xmlns:xsi="http://www.w3.org/2001/XMLSchema-instance">  
  
    ... all other XML Code  
  
</MessageEnvelope>
```



MessageHeader

Applies to all transaction types. CBP will create its own MessageHeader on response/output transaction types.

MessageHeader from the input transaction will be returned to the transmitter in the ProcessedMessageHeader block. See section entitled MessageValidationResponse.

Designation: Mandatory
Max Occurrences: One
Parent Element: MessageEnvelope

The MessageHeader element contains the following child elements:

<i>MessageHeader</i> Data Elements	Length / Type	Desig	Description	Note
MessageID	1-50AN	M	Unique ID generated by transmitter	
MessageType	1-50A	M	Possible values: <ul style="list-style-type: none"> • DocumentSubmission • DocumentValidationResponse • DocumentReviewResponse 	1
SentDateTime	1-30D	M	Time message is sent by the transmitter in Eastern Time Zone. Must be in UTC Format. See Note 2	2
TransmitterID	3-3AN	M	Three character Filer Code corresponding to the ABI "A" Record Filer Code	
TransmitterSiteCode	4-4N	M	Four digit Port Code corresponding to the ABI "A" Record Port Code	
PreparerID	3-3AN	M	Three character Filer Code corresponding to the ABI "B" Record Filer Code	
PreparerSiteCode	4-4N	M	Four digit Port Code corresponding to the ABI "B" Record Port Code	
Comment	1-100AN	C	Optional for input transactions. CBP will return "CBP" in this field on all output transactions.	

NOTE 1:

For Message Type Options, refer to Appendix D for XSD Enumerated Value Definitions.

NOTE 2:

UTC Date/Time Formats:

Here are two valid formats for UTC Date/Time:

- 2015-01-28T16:07:57-05:00
- 2015-01-28T16:07:57Z

In the first example, the -05:00 indicates that the time reported in US Eastern time is offset by five hours from UTC time (GMT). The second example provides a way to avoid the offset. There are other valid UTC time formats. More information on UTC date and time can be found by performing an internet search.

Note that daylight savings time calculations should be accounted for to ensure that submitted dates are always valid.

MessageHeader Example:

```
<DIS :MessageHeader>  
  <DIS :MessageID>1005997</DIS :MessageID>  
  <DIS :MessageType>DocumentSubmission</DIS :MessageType>  
  <DIS :SentDateTime>2010-07-28T09 :30 :47-05 :00</DIS :SentDateTime>  
  <DIS:TransmitterID>ABC</DIS:TransmitterID>  
  <DIS:TransmitterSiteCode>3001</DIS:TransmitterSiteCode>  
  <DIS:PreparerID>ABC</DIS:PreparerID>  
  <DIS:PreparerSiteCode>3001</DIS:PreparerSiteCode>  
</DIS:MessageHeader>
```

MessageBody

Designation: Mandatory
Max Occurrences: One
Parent Element: MessageEnvelope

The MessageBody element is a child of the MessageEnvelope element. It contains one of the two child elements listed below.

Only one submission package may be used in a DIS transaction. Multiple documents may be referenced from within the submission package. Examples of full DIS XML transactions (Input and Output) can be found in the last section of this DIS IG.

The following input and output child elements are available for DIS transactions:

- DocumentSubmissionPackage (Input)
- MessageValidationResponse (Output)
- DocumentReviewResponse (Status Notification – Output Only)

MessageBody Example:

```
Input

<DIS:MessageBody>
  <DIS:DocumentSubmissionPackage>
    ... more XML Code
  </DIS:DocumentSubmissionPackage>
</DIS:MessageBody>

Output

<DIS:MessageBody>
  <DIS:MessageValidationResponse>
    ... more XML Code
  </DIS:MessageValidationResponse>
</DIS:MessageBody>
```

DocumentSubmissionPackage – (Input Only)

Designation: Mandatory
Max Occurrences: One
Parent Element: MessageBody

The DocumentSubmissionPackage is a child of the MessageBody element. It contains several child and subchild elements providing all of the document specific data. Unless otherwise noted in the description, it is assumed that the maximum occurrence of a data element or data block is one.

<i>DocumentSubmission Package</i> Data Elements	Length +Type	Desig	Description	Note
SubmittedToPortCode	4N	O	Parent: <i>DocumentSubmissionPackage</i> Four digit port code where the document is being submitted. If the document is related to an entry, this would likely be the Port of Entry	
ActionCode	1-20A	M	Parent: <i>DocumentSubmissionPackage</i> Values are: <ul style="list-style-type: none"> • ADD, • DELETE • REPLACE When using the DELETE Action Code, set the DocPreviouslySubmitted data element to “Y” to avoid having to include the encoded document being deleted. See Appendix D for XSD Enumerated Value Definitions.	
TradeTransaction	0	M	Parent: <i>DocumentSubmissionPackage</i> Accepts no specific data. Accepts child data elements only	

DocumentSubmission Package Data Elements	Length +Type	Desig	Description	Note
TransactionCategory	1-20A	M	Parent: <i>TradeTransaction</i> Values are: <ul style="list-style-type: none"> • SINGLE_TXN • CONTINUOUS Use SINGLE_TXN when supplying a Filer Code and Entry Number. Otherwise use CONTINUOUS. See Appendix D for XSD Enumerated Value Definitions.	
Entry	0	M	Parent: <i>TradeTransaction</i> Accepts no specific data. Accepts child data elements only	
EntryNumber	8N	C	Parent: <i>Entry</i> Required when submitted document supports and entry or entry summary	
Filer	3AN	C	Parent: <i>Entry</i> Required when submitted document supports and entry or entry summary	
CBPRequest	0	M	Parent: <i>DocumentSubmissionPackage</i> Accepts no specific data. Accepts child data elements only	
CBPRequestID	1-30AN	M	Parent: <i>CBPRequest</i> Supply the Action Identification Number from the UC transaction E2 record. If not available use: <ul style="list-style-type: none"> • UNSOLICITED • UNKNOWN 	1
CBPRequestType	1-30AN	O	Parent: <i>CBPRequest</i> Refer to Appendix D for XSD Enumerated Value Definitions	
CBPRequestDate	1-30D	O	Parent: <i>CBPRequest</i> Request Date in UTC Format	
DocumentData	0	M	Parent: <i>DocumentSubmissionPackage</i> Accepts no specific data. Accepts child data elements only. This entire block can be repeated multiple times if submitting multiple documents in the same	



DocumentSubmission Package Data Elements	Length +Type	Desig	Description	Note
			transaction. Repeat entire block once per document.	
DocumentHeader	0	M	Parent: DocumentData Accepts no specific data. Accepts child data elements only.	
DocumentID	1-50AN	M	Parent: DocumentHeader Must be unique and never repeated by the same transmitter	
DocumentLabel	1-100AN	M	Parent: DocumentHeader See Note 2 for complete list. Available for import from CommonData.xsd	2
CompleteFileName	1-200AN	M	Parent: DocumentHeader Must be unique and never repeated by the same transmitter	
FileExtensionType	1-4AN	M	Parent: DocumentHeader See Note 3 for acceptable file extension types. Additionally, see Appendix D for XSD enumerated value definitions	3
DocPreviouslySubmitted	1A	C	Parent: DocumentHeader Must be Y or N.	
DocumentDescription	1-50AN	O	Parent: DocumentHeader	
GovtAgencyList	0	M	Parent: DocumentData Accepts no specific data. Accepts child data elements only	
GovtAgency	1-20AN	M	Parent: GovtAgencyList	4
Comment	1-100AN	O	Parent: DocumentData	



DocumentSubmission Package Data Elements	Length +Type	Desig	Description	Note
OptionalData	0	O	Parent: DocumentData Accepts no specific data. Accepts child data elements only. All data elements under OptionalData are used to supply optional document specific data at the trade partner's discretion.	
InvoiceData	0	O	Parent: OptionalData Accepts no specific data. Accepts child data elements only	
InvoiceNbr	1-50AN	O	Parent: InvoiceData	
InvoiceType	1-50AN	O	Parent: InvoiceData See Appendix D for XSD Enumerated Value Definitions	
InvoiceLineItemData	0	O	Parent: InvoiceData Accepts no specific data. Accepts child data elements only	
InvoiceLineNbr	1-3AN	O	Parent: InvoiceLineItemData	
CommodityData	0	O	Parent: InvoiceLineItemData Accepts no specific data. Accepts child data elements only	
HTSNumber	4-10N	O	Parent: CommodityData	
CommodityDescription	1-200AN	O	Parent: CommodityData	
CountryOfOrigin	1-50AN	O	Parent: CommodityData	
PortOfLading	4N	O	Parent: CommodityData Foreign Port of Lading	
PortOfEntry	4N	O	Parent: CommodityData	
TradeParties	0	O	Parent: CommodityData Accepts no specific data. Accepts child data elements only	



<i>DocumentSubmission Package</i> Data Elements	Length +Type	Desig	Description	Note
TradeParty	0	O	Parent: <i>TradeParties</i> Accepts no specific data. Accepts child data elements only	
TradePartyID	100	O	Parent: <i>TradeParty</i> IR Number of Trade Party. Dashes are optional. CBPRequestType	
TradePartyType	20AN	O	Parent: <i>TradeParty</i> See Appendix D for XSD Enumerated Value Definition	
DocumentObject	Base-64 encoded binary	C	Parent: <i>DocumentData</i> Used to supply encoded document. Document should be encoded as a base64 string. Do not exceed Max. Message size (noted on Page 6) Do not include DocumentObject when using the DELETE Action Code. Set the DocPreviouslySubmitted data element to "Y" and DocumentObject is not required.	

NOTE 1:

CBPRequestID

Use UNSOLICITED when sending documents prior to a receiving a request for documents.

Use UNKNOWN when sending documents and no Action ID was provided in the request for documents.

NOTE 2:

See Appendix A for List of Supported Documents and their Specific Metadata Validations

NOTE 3:

Acceptable Values for FileExtensionType

These are the preferred file types for DIS transactions:

- PDF

- GIF
- PNG
- JPG
- JPEG

Other acceptable file types include the following but will make it more difficult for CBP to view the document:

- DOC
- DOCX
- PPT
- BMP

Transmitters should not submit TIF or TIFF file formats. Additionally, CBP will not reject for file formats not on this list. Transmitters should validate the file types when programming their DIS interface and restrict the user from submitting any file types not on this list.

NOTE 4:

See Appendix A for List of Supported Documents and their Specific Metadata Validations.



Message Validation Response – (Output Only)

Designation: Mandatory
Max Occurrences: One
Parent Element: MessageBody

The DocumentSubmissionPackage is a child of the MessageBody element. It contains several child and subchild elements providing all of the document specific data.

MessageValidation Response Data Elements	Length +Type	Desig	Description	Note
MessageLevelResult	0	M	Parent: <i>MessageValidationResponse</i> Accepts no specific data. Accepts child data elements only	
ProcessedMessageHeader	0	M	Parent: <i>MessageLevelResult</i> Accepts no specific data. Accepts child data elements only. This block is used to return the MessageHeader and all of its child data elements supplied by the transmitter from the input transaction	
MessageID	1-50AN	M	Parent: <i>ProcessedMessageHeader</i> MessageID supplied by transmitter	
MessageType	1-50AN	M	Parent: <i>ProcessedMessageHeader</i> DocumentSubmission is only supported message type for input at this time.	
SentDateTime	1-50D	M	Parent: <i>ProcessedMessageHeader</i> SentDateTime supplied by transmitter	
TransmitterID	3AN	M	Parent: <i>ProcessedMessageHeader</i> TransmitterID supplied by transmitter	
TransmitterSiteCode	4N	M	Parent: <i>ProcessedMessageHeader</i> TransmitterSiteCode supplied by transmitter	
PreparerID	3AN	M	Parent: <i>ProcessedMessageHeader</i> PreparerID supplied by transmitter	

MessageValidation Response Data Elements	Length +Type	Desig	Description	Note
PreparerSiteCode	4N	M	Parent: <i>ProcessedMessageHeader</i> PreparerSiteCode supplied by transmitter	
MessageProcessingResult	0	M	Parent: <i>MessageLevelResult</i>	
ProcessingEvent	1-50AN	M	Parent: <i>MessageProcessingResult</i> See Note 1 for possible values	1
ProcessingStatus	1-6AN	M	Parent: <i>MessageProcessingResult</i> Values are: <ul style="list-style-type: none"> • PASSED • FAILED 	1
ProcessingStatusSummary Text	1-2000AN	O	Parent: <i>MessageProcessingResult</i>	
ProcessingLogText	1-2000AN	M	Parent: <i>MessageProcessingResult</i> One or more words describing success or failure of the transaction	
DocumentLevelResult	0		Parent: <i>MessageValidationResponse</i> Accepts no specific data. Accepts child data elements only. This block will be repeated if multiple documents were submitted in the same transaction. Repeats one time per document.	
ProcessedDocumentHeader	0		Parent: <i>DocumentLevelResult</i> Accepts no specific data. Accepts child data elements only. This block will return the data from the input transaction's DocumentHeader block	
DocumentID	1-50AN		Parent: <i>ProcessedDocumentHeader</i> Returned from input transaction	
DocumentLabel	1-100AN		Parent: <i>ProcessedDocumentHeader</i> Returned from input transaction	
CompleteFileName	1-100AN		Parent: <i>ProcessedDocumentHeader</i> Returned from input transaction	



MessageValidation Response Data Elements	Length +Type	Desig	Description	Note
FileExtensionType	1-4AN		Parent: <i>ProcessedDocumentHeader</i> Returned from input transaction	
DocumentDescription	1-255AN		Parent: <i>ProcessedDocumentHeader</i> Returned from input transaction	
TradeTransaction	0		Parent: <i>DocumentLevelResult</i> Accepts no specific data. Accepts child data elements only. This block will return the data from the input transaction's TradeTransaction block	
TransactionCategory	1-20AN		Parent: <i>TradeTransaction</i> Returned from input transaction	
Entry	0		Parent: <i>TradeTransaction</i> Accepts no specific data. Accepts child data elements only. This block will return the data from the input transaction's Entry block	
EntryNumber	8N		Parent: <i>Entry</i> Returned from input transaction	
Filer	3AN		Parent: <i>Entry</i> Returned from input transaction	
DocumentProcessingResult	0		Parent: <i>DocumentLevelResult</i> Accepts no specific data. Accepts child data elements only.	
ProcessingEvent	1-50AN		Parent: <i>DocumentProcessingResult</i> See Note 1 for possible values	1
ProcessingStatus	1-2000AN		Parent: <i>DocumentProcessingResult</i> Values are: <ul style="list-style-type: none"> • PASSED • FAILED 	1
ProcessingLogText	1-255AN		Parent: <i>DocumentProcessingResult</i> One or more words describing success or failure of the transaction	



NOTE 1:

Values for ProcessingEvent:

- INITIAL_VALIDATION (Current Use)
- DETAILED_VALIDATION (Future Use)
- REVIEW (Future Use)
- OTHER (Future Use)

Values for ProcessingStatus:

- PASSED
- FAILED

See Appendix D for XSD Enumerated Value Definitions



Document Review Response (Status Notification – Output Only)

Designation: Mandatory

Max Occurrences: One

Parent Element: MessageBody

The DocumentReviewResponse is a child of the MessageBody element. It contains several child and subchild elements.

DocumentReview Response Data Elements	Length +Type	Desig	Description	Note
DocumentHeader	0	M	Parent: <i>DocumentReviewResponse</i> Accepts no specific data. Accepts child data elements only	
DocumentID	1-50AN	M	Parent: <i>DocumentHeader</i> Returned from original DIS transaction	
DocumentLabel	1-100AN	M	Parent: <i>DocumentHeader</i> Returned from original DIS transaction.	
CompleteFileName	1-200AN	M	Parent: <i>DocumentHeader</i> Returned from original DIS transaction.	
FileExtensionType	1-4AN	M	Parent: <i>DocumentHeader</i> Returned from original DIS transaction.	
DocumentDescription	1-50AN	O	Parent: <i>DocumentHeader</i>	
SubmittedToPortCode	4N	O	Parent: <i>DocumentReviewResponse</i> Returned from original DIS transaction.	
TradeTransaction	0	O	Parent: <i>DocumentReviewResponse</i> Accepts no specific data. Accepts child data elements only. This block will return the data from the input transaction's TradeTransaction block	
TransactionCategory	1-20AN	O	Parent: <i>TradeTransaction</i> Returned from original DIS transaction	
Entry	0	O	Parent: <i>TradeTransaction</i> Accepts no specific data. Accepts child data elements only. This block will	



DocumentReview Response Data Elements	Length +Type	Desig	Description	Not e
			return the data from the original DIS transaction's Entry block	
DocumentReview Response Data Elements	Length +Type	Desig	Description	Not e
EntryNumber	8N	O	Parent: Entry Returned from original DIS transaction	
Filer	3AN	O	Parent: Entry Returned from original DIS transaction	
DocumentReviewResult	0	O	Parent: DocumentReviewResponse Accepts no specific data. Accepts child data elements only. This block contains data elements that explain why a CBP Officer is rejecting the document back to the trade partner	
ProcessingEvent	1-50AN	O	Parent: DocumentReviewResult Will always be REVIEW	
DocumentReviewStatus	1-20AN	O	Parent: DocumentReviewResult Will always be REJECTED	
DocumentReviewComment	1-4000AN	O	Parent: DocumentReviewResult Free form comments entered by the CBP reviewing officer	
DocumentRejectReason	1-50AN	O	Parent: DocumentReviewResult See Note 1 for list of values.	1

NOTE 1:

Values for DocumentRejectReason:

- POOR_IMAGE_QUALITY
- INCORRECT_METADATA_ASSOCIATION
- INCORRECT_DOCUMENT_RECEIVED
- NO_ASSOCIATED_TRANSACTION
- INCOMPLETE_DOCUMENT_SET
- INCORRECT_CBP_REQUEST
- OTHER



See Appendix D for XSD Enumerated Value Definitions

APPENDIX A: List of Supported Documents

This section provides the list of supported documents in DIS, an overview of the associated metadata elements, and any validations that are performed by the system. Any mandatory requirements for a document are also indicated.



Documents that may be submitted to DIS via Secure FTP, Secure Web Services, MQ Queues, or Email

Agency Code Use to submit document via email to DIS	Official Document Name/Description	Document Type	Document Label Value Use to Submit document via XML to DIS "enumDocumentLabel" enumeration value (CommonData.xsd)	DocCode Use to submit document via email to DIS	Metadata/Comments (O = Optional)
Agricultural Marketing Service (AMS)					
AMS	Foreign Government Export Certificate (AMS-MO2 (Various Foreign Government Form Numbers))	CERTIFICATE	AMS_FOREIGN_GOV_T_EXPORT	AMS01	NO METADATA LISTED
AMS	Request for Inspection, Reinsertion, Appeal Inspection	DOCUMENT	AMS_FV_237_REQ_FOR_INSP	AMS02	The use of this document in DIS is limited to entries for over-the-counter processing (Non-ABI submission) where PGA Message set data is otherwise required.
AMS	Application for Inspection	DOCUMENT	AMS_FV_356_APPL_FOR_INSP	AMS03	The use of this document in DIS is limited to entries for over-the-counter processing (Non-ABI submission) where PGA Message set data is otherwise required.
AMS	Importers Exempt Commodity Form	FORM	AMS_FV_6_IMPORTERS_EXEMPT	AMS04	The use of this document in DIS is limited to entries for over-the-counter processing (Non-ABI submission) where PGA Message set data is otherwise required.
AMS	Notification of Entry	DOCUMENT	AMS_FV_357_NOTIFICATION_OF_ENTRY	AMS05	The use of this document in DIS is limited to entries for over-the-



Agency Code	Official Document Name/Description	Document Type	Document Label Value Use to Submit document via XML to DIS “enumDocumentLabel” enumeration value (CommonData.xsd)	DocCode Use to submit document via email to DIS	Metadata/Comments (O = Optional)
Use to submit document via email to DIS					
					counter processing (Non-ABI submission) where PGA Message set data is otherwise required.
AMS	Import Request Shell Eggs	DOCUMENT	AMS_LPS_222_IMPORT_REQ_SHELL_EGGS	AMS06	The use of this document in DIS is limited to entries for over-the-counter processing (Non-ABI submission) where PGA Message set data is otherwise required.
Animal and Plant Health Inspection Service (APHIS)					
APH	STAT	DOCUMENT	APH_STAT	APH01	NO METADATA LISTED
APH	Various import documents (invoices, packing list, etc.)	DOCUMENT	APH_SUPPORTING_DOCS	APH02	NO METADATA LISTED
APH	Declaration of Importation	DECLARATION	APH_VS17_29_IMPORT	APH03	NO METADATA LISTED
APH	Application for Inspection and Dipping	DOCUMENT	APH_VS17_32_INSP_AND_DIPPING	APH04	NO METADATA LISTED
APH	U. S. Veterinary Biological Product Permit	PERMIT	APH_2006_US_VET_BIO_PROD	APH05	NO METADATA LISTED
	Document removed		Document removed	APH06	Document removed at the request of PGA
	Document removed		Document removed	APH07	Document removed at the request of PGA
APH	Animal Care Health Certificate	CERTIFICATE	APH_7041_ANIMAL_CARE_HEALTH	APH08	The use of this document in DIS is limited to entries for over-the-counter processing (Non-ABI

Agency Code Use to submit document via email to DIS	Official Document Name/Description	Document Type	Document Label Value Use to Submit document via XML to DIS "enumDocumentLabel" enumeration value (CommonData.xsd)	DocCode Use to submit document via email to DIS	Metadata/Comments (O = Optional)
					submission) where PGA Message set data is otherwise required.
APH	Continuation Sheet for Application for Import Permit for Dogs	DOCUMENT	APH_7040A_IMPORT_PERMIT_FOR_DOGS_CONT	APH09	The use of this document in DIS is limited to entries for over-the-counter processing (Non-ABI submission) where PGA Message set data is otherwise required.
APH	Continuation Sheet for Veterinary Treatment Agreement	AGREEMENT	APH_7043A_VET_TREATMENT_CONT	APH10	The use of this document in DIS is limited to entries for over-the-counter processing (Non-ABI submission) where PGA Message set data is otherwise required.
APH	Animal Care – Veterinary Treatment Agreement	AGREEMENT	APH_7043_VET_TREATMENT	APH11	The use of this document in DIS is limited to entries for over-the-counter processing (Non-ABI submission) where PGA Message set data is otherwise required.
APH	Application for Import Permit for Dogs	DOCUMENT	APH_7040_APPL_IMPORT_PERMIT_FOR_DOGS	APH12	The use of this document in DIS is limited to entries for over-the-counter processing (Non-ABI submission) where PGA Message set data is otherwise required.
APH	Import Permit for Dogs	PERMIT	APH_7040B_DOGS_IMPORT	APH13	The use of this document in DIS is limited to entries for over-the-counter processing (Non-ABI submission) where PGA Message set data is otherwise required.



Agency Code Use to submit document via email to DIS	Official Document Name/Description	Document Type	Document Label Value Use to Submit document via XML to DIS "enumDocumentLabel" enumeration value (CommonData.xsd)	DocCode Use to submit document via email to DIS	Metadata/Comments (O = Optional)
APH	Rabies Vaccination Certificate	CERTIFICATE	APH_7042_RABIES_VACC	APH14	The use of this document in DIS is limited to entries for over-the-counter processing (Non-ABI submission) where PGA Message set data is otherwise required.
APH	Interstate Movement, Importation or Courtesy Permit	PERMIT	APH_2000_INTERSTATE_MOVE_COURTESY	APH15	The use of this document in DIS is limited to entries for over-the-counter processing (Non-ABI submission) where PGA Message set data is otherwise required.
APH	Foreign Site Certificate of Inspection and/or Treatment	CERTIFICATE	APH_PPQ_203_FOREIGN_SITE	APH16	The use of this document in DIS is limited to entries for over-the-counter processing (Non-ABI submission) where PGA Message set data is otherwise required.
APH	Notice of Arrival	DOCUMENT	APH_PPQ_368_NOTICE_OF_ARRIVAL	APH17	The use of this document in DIS is limited to entries for over-the-counter processing (Non-ABI submission) where PGA Message set data is otherwise required.
APH	Permit to Import Soil	PERMIT	APH_PPQ_525B_IMPORT_SOIL	APH18	The use of this document in DIS is limited to entries for over-the-counter processing (Non-ABI submission) where PGA Message set data is otherwise required.

Agency Code Use to submit document via email to DIS	Official Document Name/Description	Document Type	Document Label Value Use to Submit document via XML to DIS "enumDocumentLabel" enumeration value (CommonData.xsd)	DocCode Use to submit document via email to DIS	Metadata/Comments (O = Optional)
APH	Application for Permit to Move Live Plant Pests or Noxious Weeds	DOCUMENT	APH_PPQ_526_APPL_FO_PERMIT_TO_MOVE	APH19	The use of this document in DIS is limited to entries for over-the-counter processing (Non-ABI submission) where PGA Message set data is otherwise required.
APH	Application for Permit to Import Timber Products (SDS)	DOCUMENT	APH_PPQ_585_APPL_FOR_PERMIT_TO_IMPORT	APH20	The use of this document in DIS is limited to entries for over-the-counter processing (Non-ABI submission) where PGA Message set data is otherwise required.
APH	Permit to Transit Plants and/or Plant Products, Plant Pests, and/or Associated Soil through the U.S.	PERMIT	APH_PPQ_586_TRANSIT_PLANTS	APH21	The use of this document in DIS is limited to entries for over-the-counter processing (Non-ABI submission) where PGA Message set data is otherwise required.
APH	Permit to Import Plant or Plant Products	PERMIT	APH_PPQ_587_IMPORT_PLANT	APH22	The use of this document in DIS is limited to entries for over-the-counter processing (Non-ABI submission) where PGA Message set data is otherwise required.
APH	Controlled Import Permit	PERMIT	APH_PPQ_588_CONTROLLED_IMPORT	APH23	The use of this document in DIS is limited to entries for over-the-counter processing (Non-ABI submission) where PGA Message set data is otherwise required.
APH	General Permit to Engage in the Business of Import,	PERMIT	APH_PPQ_622_PERMIT_TO_ENGAGE	APH24	The use of this document in DIS is limited to entries for over-the-



Agency Code	Official Document Name/Description	Document Type	Document Label Value Use to Submit document via XML to DIS “enumDocumentLabel” enumeration value (CommonData.xsd)	DocCode Use to submit document via email to DIS	Metadata/Comments (O = Optional)
	Export, or Re-Exporting Terrestrial Plants				counter processing (Non-ABI submission) where PGA Message set data is otherwise required.
	Document removed		Document removed	APH25	Document removed at the request of PGA
APH	Owner/Shipper Certificate – Fitness to Travel to a Slaughter Facility	CERTIFICATE	APH_VS10_13_A_OWNER_SHIPPER	APH26	The use of this document in DIS is limited to entries for over-the-counter processing (Non-ABI submission) where PGA Message set data is otherwise required.
APH	U.S. Veterinary Permit for Importation & Transportation of Controlled Materials and Organisms and Vectors	PERMIT	APH_VS16_6_6A_US_VET	APH27	The use of this document in DIS is limited to entries for over-the-counter processing (Non-ABI submission) where PGA Message set data is otherwise required.
	Document removed		Document removed	APH28	Document removed at the request of PGA
	Document removed		Document removed	APH29	Document removed at the request of PGA
<i>Bureau of Alcohol, Tobacco, Firearms and Explosives (ATF)</i>					
	Document removed		Document removed	ATF01	The use of this document in DIS is not permitted. Document removed at the request of PGA.
	Document removed		Document removed	ATF02	The use of this document in DIS is not permitted. Document removed at the request of PGA.

Agency Code	Official Document Name/Description	Document Type	Document Label Value Use to Submit document via XML to DIS “enumDocumentLabel” enumeration value (CommonData.xsd)	DocCode Use to submit document via email to DIS	Metadata/Comments (O = Optional)
Use to submit document via email to DIS					
	Document removed		Document removed	ATF03	The use of this document in DIS is not permitted. Document removed at the request of PGA.
	Document removed		Document removed	ATF04	The use of this document in DIS is not permitted. Document removed at the request of PGA.
Department of Commerce Bureau of the Census (CBC)					
CBC	Kimberley Process Import Certificate	CERTIFICATE	KIMBERLEY_PROCESS_IMPORT_CERT	CBC01	PDFs only
CBC	Kimberley Process Export Certificate	CERTIFICATE	KIMBERLEY_PROCESS_EXPORT_CERT	CBC02	PDFs only
Centers for Disease Control and Prevention (CDC)					
CDC	Permit to Import or Transfer Etiologic Agents or Vectors of Human Disease	PERMIT	CDC_0728_IMPORT_ETIOLOGIC_AGENTS	CDC01	NO METADATA LISTED
CDC	Permits to import African rodents, civets or turtles	PERMIT	CDC_IMPORT_AFRICAN_RODENTS	CDC02	NO METADATA LISTED
	Document removed		Document removed	CDC03	Document removed at the request of PGA
	Document removed		Document removed	CDC04	Document removed at the request of PGA
CDC	Permit to Import a Dog Unimmunized Against Rabies – Single Entry	PERMIT	CDC_IMPORT_A_DOG	CDC05	NO METADATA LISTED
CDC	Application to Transfer Select Agents and Toxins	DOCUMENT	CDC_APPL_TO_TRANSFER	CDC06	NO METADATA LISTED



Agency Code Use to submit document via email to DIS	Official Document Name/Description	Document Type	Document Label Value Use to Submit document via XML to DIS "enumDocumentLabel" enumeration value (CommonData.xsd)	DocCode Use to submit document via email to DIS	Metadata/Comments (O = Optional)
CDC	Certification Statement/Documentation for Noninfectious Material	DOCUMENT	CDC_NONINFECTIOUS_MATERIAL	CDC07	NO METADATA LISTED
CDC	CDC Permission Message	DOCUMENT	CDC_PERMISSION	CDC08	NO METADATA LISTED
CDC	Rabies Vaccination Certificate	CERTIFICATE	CDC_RABIES_VACC	CDC09	NO METADATA LISTED
	Document removed		Document removed	CDC10	Document removed at the request of PGA
	Document removed		Document removed	CDC11	Document removed at the request of PGA
	Document removed		Document removed	CDC12	Document removed at the request of PGA
CDC	Nonhuman Primate Notification Message	DOCUMENT	CDC_NONHUMAN_PRIMATE_NOTIFICATION	CDC13	NO METADATA LISTED
Consumer Products Safety Commission (CPSC)					
CPS	Certificate of Compliance	CERTIFICATE	CERTIFICATE_OF_COMPLIANCE	CPS01	NO METADATA LISTED
Defense Contract Management Agency (DCMA)					
DCM	DCMA Certification Of Duty-Free Entry	CERTIFICATE	DCM_DUTY_FREE_ENTRY	DCM01	Entry Number – O
Drug Enforcement Administration (DEA)					
	Document removed		Document removed	DEA01	Document removed at the request of PGA
	Document removed		Document removed	DEA02	Document removed at the request of PGA

Agency Code	Official Document Name/Description	Document Type	Document Label Value Use to Submit document via XML to DIS “enumDocumentLabel” enumeration value (CommonData.xsd)	DocCode Use to submit document via email to DIS	Metadata/Comments (O = Optional)
Use to submit document via email to DIS					
	Document removed		Document removed	DEA03	Document removed at the request of PGA
	Document removed		Document removed	DEA04	Document removed at the request of PGA
<i>Directorate of Defense Trade Controls (DDTC)</i>					
DTC	Application/License for Temporary Import of Unclassified Defense Articles	LICENSE	DTC_DSP_61_TEMP_IMPORT	DTC01	The use of this document in DIS is limited to entries for over-the-counter processing (Non-ABI submission) where PGA Message set data is otherwise required.
DTC	Application for Amendment to a DSP-61 License	DOCUMENT	DTC_DSP_62_APPL_FOR_AMENDMENT	DTC02	The use of this document in DIS is limited to entries for over-the-counter processing (Non-ABI submission) where PGA Message set data is otherwise required.
DTC	Application/License for Temporary Export of Unclassified Defense Articles	LICENSE	DTC_DSP_73_TEMP_EXPORT	DTC03	The use of this document in DIS is limited to entries for over-the-counter processing (Non-ABI submission) where PGA Message set data is otherwise required.
DTC	Application for Amendment to a DSP-73 License	DOCUMENT	DTC_DSP_74_APPL_FOR_AMENDMENT	DTC04	The use of this document in DIS is limited to entries for over-the-counter processing (Non-ABI submission) where PGA Message set data is otherwise required.

Agency Code Use to submit document via email to DIS	Official Document Name/Description	Document Type	Document Label Value Use to Submit document via XML to DIS "enumDocumentLabel" enumeration value (CommonData.xsd)	DocCode Use to submit document via email to DIS	Metadata/Comments (O = Optional)
DTC	Application/License for Permanent/Temporary Export or Temporary Import of Classified Defense Articles and Classified Technical Data	LICENSE	DTC_DSP_85_PERM_TEMP_EXPORT_IMPORT	DTC05	The use of this document in DIS is limited to entries for over-the-counter processing (Non-ABI submission) where PGA Message set data is otherwise required.
Department of Commerce Enforcement and Compliance (E&C)					
ECO	AD/CVD Foreign Government Export License: Sugar from Mexico	LICENSE	MX_EXPORT_SUGAR_LICENSE	ECO01	NO METADATA LISTED
ECO	AD/CVD Foreign Government Export License: Uranium Products from Russia, Ukraine and France	LICENSE	ECO_EXPORT_URANIUM_PROD	ECO02	NO METADATA LISTED
ECO	AD/CVD Foreign Government Export Certificate: Uranium Products from Russia	CERTIFICATE	ECO_EXPORT_URANIUM_PROD_OF_RU	ECO03	NO METADATA LISTED
ECO	AD/CVD Declaration of Intent to Re-Export: Uranium Products from Russia within a Certain Period	DECLARATION	ECO_RE_EXPORT_URANIUM_PROD_OF_RU	ECO04	NO METADATA LISTED

Agency Code Use to submit document via email to DIS	Official Document Name/Description	Document Type	Document Label Value Use to Submit document via XML to DIS "enumDocumentLabel" enumeration value (CommonData.xsd)	DocCode Use to submit document via email to DIS	Metadata/Comments (O = Optional)
ECO	AD/CVD Declaration of Intent to Re-Export: Uranium Products from France	DECLARATION	ECO_RE_EXPORT_URANIUM_PROD_OF_FR	ECO05	NO METADATA LISTED
ECO	AD/CVD Processor Certification: Uranium Products from Russia	CERTIFICATE	ECO_URANIUM_PROD_OF_RU	ECO06	NO METADATA LISTED
ECO	AD/CVD End-User Certification: Uranium Products from Russia	CERTIFICATE	ECO_URANIUM_PROD_OF_RU_END_USER	ECO07	NO METADATA LISTED
ECO	AD/CVD End-User Certification: Uranium Products from France	CERTIFICATE	ECO_URANIUM_PROD_OF_FR_END_USER	ECO08	NO METADATA LISTED
ECO	AD/CVD Origin Certification: Uranium Products from Any Country Including Russia	CERTIFICATE	ECO_URANIUM_PROD_ORIGIN	ECO09	NO METADATA LISTED
ECO	AD/CVD Anticircumvention Certification: Uranium Products From Any Country	CERTIFICATE	ECO_URANIUM_PROD	ECO10	NO METADATA LISTED
ECO	AD/CVD Anticircumvention and/or Scope Certifications: Solar Products from Taiwan (AD only; importer and exporter)	CERTIFICATE	ECO_AD_SOLAR_PROD_OF_TW	ECO11	NO METADATA LISTED
ECO	AD/CVD Anticircumvention and/or Scope Certifications: Solar Cells from China (AD	CERTIFICATE	ECO_AD_CVD_SOLAR_CELLS_OF_CN	ECO12	NO METADATA LISTED



Agency Code Use to submit document via email to DIS	Official Document Name/Description	Document Type	Document Label Value Use to Submit document via XML to DIS "enumDocumentLabel" enumeration value (CommonData.xsd)	DocCode Use to submit document via email to DIS	Metadata/Comments (O = Optional)
	and CVD; importer and exporter)				
ECO	AD/CVD Anticircumvention and/or Scope Certifications: Small Diameter Graphite Electrodes from China (AD; importer and exporter)	CERTIFICATE	ECO_AD_SMALL_DIA_GRAPHITE_ELECTRODES_OF_CN	ECO13	NO METADATA LISTED
ECO	AD/CVD Anticircumvention and/or Scope Certifications: Glycine from China (AD only; importer only)	CERTIFICATE	ECO_AD_GLYCINE_OF_CN	ECO14	NO METADATA LISTED
ECO	AD/CVD Anticircumvention and/or Scope Certifications: Butt-weld pipe fittings from China (AD only, importer only)	CERTIFICATE	ECO_AD_BUTT_WELD_PIPE_FITTINGS_OF_CN	ECO15	NO METADATA LISTED
ECO	AD/CVD Anticircumvention and/or Scope Certifications: Pasta from Italy (AD and CVD; importer only)	CERTIFICATE	ECO_AD_CVD_PASTA_OF_IT	ECO16	NO METADATA LISTED
ECO	AD/CVD Anticircumvention and/or Scope Certifications: Organic Pasta from Italy (AD and CVD; importer only)	CERTIFICATE	ECO_AD_CVD_ORGANIC_PASTA_OF_IT	ECO17	NO METADATA LISTED

Agency Code Use to submit document via email to DIS	Official Document Name/Description	Document Type	Document Label Value Use to Submit document via XML to DIS "enumDocumentLabel" enumeration value (CommonData.xsd)	DocCode Use to submit document via email to DIS	Metadata/Comments (O = Optional)
Environmental Protection Agency (EPA)					
EPA	Importation of Motor Vehicles and Engines (on road)	FORM	EPA_3520_1_IMPORTER_OF_MOTOR_V_E_ON_ROAD	EPA01	HTS Number – O Importer – O Owner – O Vehicle Identification Number – O Manufacturer – O Model – O EPA Cert Number – O Entry Date – O
EPA	Importation of Motor Vehicles and Engines (off road)	FORM	EPA_3520_21_IMPORT_OF_MOTOR_V_E_OFF_ROAD	EPA02	HTS Number – O Importer – O Owner – O Engine Manufacturer/Model/Serial Number – O Vehicle Manufacturer/Model/Serial Number – O Engine or Vehicle Build Date – O Entry Date – O
EPA	NOA (Notice of Arrival of Pesticides and Devices)	FORM	EPA_3540_1_NOA	EPA03	HTS Number – O Entry Date – O CAS Number – O Product Name – O Active Ingredients – O Country of Origin – O



Agency Code Use to submit document via email to DIS	Official Document Name/Description	Document Type	Document Label Value Use to Submit document via XML to DIS "enumDocumentLabel" enumeration value (CommonData.xsd)	DocCode Use to submit document via email to DIS	Metadata/Comments (O = Optional)
					Importer/Consignee – O Shipper – O EPA Registration No – O EPA Producer Establishment No – O
EPA	Pesticide Label	LABEL	EPA_PESTICIDE	EPA04	Entry Date – O HTS Number – O CAS Number – O Product Name – O Active Ingredients – O Importer – O Manufacturer – O EPA Registration No – O EPA Producer Establishment No – O
EPA	Pre-approved Vehicle/Engine Exemption Letter	DOCUMENT	EPA_V_E_EXEMPTION	EPA05	HTS Number – O Entry Date – O Importer – O Owner – O Engine Manufacturer/Model/Serial Number – O Vehicle Manufacturer/Model/Serial Number – O Engine or Vehicle Build Date – O
EPA	EPA TSCA Certification	CERTIFICATE	EPA_TSCA	EPA06	Importer Number – O



Agency Code	Official Document Name/Description	Document Type	Document Label Value Use to Submit document via XML to DIS “enumDocumentLabel” enumeration value (CommonData.xsd)	DocCode Use to submit document via email to DIS	Metadata/Comments (O = Optional)
Use to submit document via email to DIS					
					HTS Number – O CAS Number – O EPA Registration No – O EPA Producer Establishment No – O
EPA	Non-objection Notice	LETTER	EPA_NON_OBJECTION_NOTICE	EPA07	NO METADATA LISTED
EPA	(CAA) Import of Ozone Depleting Substances (ODS)	DOCUMENT	EPA_IMPORT OF ODS	EPA08	The use of this document in DIS is limited to entries for over-the-counter processing (Non-ABI submission) where PGA Message set data is otherwise required.
Foreign Agricultural Service (FAS)					
FAS	Certificate of Quota Eligibility (OMB 0551-0014)	CERTIFICATE	FAS_QUOTA_ELIGIBILITY	FAS01	NO METADATA LISTED
FAS	Specialty Sugar Certificate (OMB 0551-0025)	CERTIFICATE	FAS_SPECIALTY_SUGAR	FAS02	NO METADATA LISTED
FAS	General Note 15c Letter of Exemption	LETTER	FAS_LETTER_OF_EXEMPTION	FAS03	NO METADATA LISTED
Food Safety and Inspection Service (FSIS)					
FSI	Meat and Poultry Export Certificate of Wholesomeness	CERTIFICATE	FSI_MEAT_POULTRY_EXPORT	FSI01	NO METADATA LISTED
FSI	Import Inspection Application and Report	DOCUMENT	FSI_FORM_9540_1_IMPORT_INSPECT_APPL	FSI02	The use of this document in DIS is limited to entries for over-the-counter processing (Non-ABI



Agency Code	Official Document Name/Description	Document Type	Document Label Value Use to Submit document via XML to DIS "enumDocumentLabel" enumeration value (CommonData.xsd)	DocCode	Metadata/Comments (O = Optional)
Use to submit document via email to DIS				Use to submit document via email to DIS	submission) where PGA Message set data is otherwise required.
U.S. Department of the Interior, Fish & Wildlife Service (FWS)					
FWS	Transportation Documents	DOCUMENT	FWS_TRANSPORTATION	FWS01	NO METADATA LISTED
FWS	Transaction Documents	DOCUMENT	FWS_TRANSACTION	FWS02	NO METADATA LISTED
FWS	Commodity Specific Documents	DOCUMENT	FWS_COMMODITY_SPECIFIC	FWS03	NO METADATA LISTED
FWS	CITES Foreign Export Permit	PERMIT	FWS_CITES_FOREIGN_EXPORT	FWS04	NO METADATA LISTED
FWS	CITES Foreign Re-Export Certificate	CERTIFICATE	FWS_CITES_FOREIGN_RE_EXPORT	FWS05	NO METADATA LISTED
FWS	CITES Foreign 'Other' Certificate	CERTIFICATE	FWS_CITES_FOREIGN_OTHER	FWS06	NO METADATA LISTED
FWS	CITES Import Permit	PERMIT	FWS_CITES_IMPORT	FWS07	NO METADATA LISTED
FWS	Declaration for the Importation and Exportation of Fish or Wildlife (Form 3-177)	DECLARATION	FWS_FORM_3_177	FWS08	NO METADATA LISTED
FWS	Wildlife Export and Re-Export Permits Issued by Foreign Government	PERMIT	FWS_WILDLIFE_EXPORT_RE_EXPORT	FWS09	NO METADATA LISTED

Agency Code Use to submit document via email to DIS	Official Document Name/Description	Document Type	Document Label Value Use to Submit document via XML to DIS “enumDocumentLabel” enumeration value (CommonData.xsd)	DocCode Use to submit document via email to DIS	Metadata/Comments (O = Optional)
FWS	Endangered Species Act Import Permit	PERMIT	FWS_ENDANGERED_SPECIES_ACT	FWS10	NO METADATA LISTED
FWS	Marine Mammal Protection Act Import Permit	PERMIT	FWS_MARINE_MAMMAL_PROTECTION_ACT	FWS11	NO METADATA LISTED
FWS	Wild Bird Conservation Act Import Permit	PERMIT	FWS_WILD_BIRD_CONSERVATION_ACT	FWS12	NO METADATA LISTED
FWS	Migratory Bird Treaty Act Import Permit	PERMIT	FWS_MIGRATORY_BIRD_TREATY_ACT	FWS13	NO METADATA LISTED
FWS	Injurious Species Import Permit	PERMIT	FWS_INJURIOUS_SPECIES	FWS14	NO METADATA LISTED
FWS	Bald and Golden Eagle Protection Act Import Permit	PERMIT	FWS_BALD_AND_GOLDEN_EAGLE_PROTECTION_ACT	FWS15	NO METADATA LISTED
<i>Department of Treasury, Internal Revenue Service (IRS)</i>					
IRS	IRS Form 720	FORM	IRS_FORM_720	IRS01	NO METADATA LISTED
IRS	IRS Form 720x	FORM	IRS_FORM_720X	IRS02	NO METADATA LISTED
IRS	IRS Form 6627	FORM	IRS_FORM_6627	IRS03	NO METADATA LISTED

Agency Code Use to submit document via email to DIS	Official Document Name/Description	Document Type	Document Label Value Use to Submit document via XML to DIS "enumDocumentLabel" enumeration value (CommonData.xsd)	DocCode Use to submit document via email to DIS	Metadata/Comments (O = Optional)
National Highway Traffic Safety Administration (NHTSA)					
NHT	DOT Conformance Bond Form HS-474	FORM	NHT_HS_474_DOT_CONF_BOND	NHT01	NO METADATA LISTED
NHT	Signed Manufacturer's Compliance Letter	LETTER	NHT_SIGNED_MANUF_COMPL	NHT02	NO METADATA LISTED
NHT	Official Orders	LETTER	NHT_OFFICIAL_ORDERS	NHT03	NO METADATA LISTED
NHT	Incomplete Vehicle Document	DOCUMENT	NHT_INCOMPLETE_VEHICLE	NHT04	NO METADATA LISTED
NHT	Motor Vehicle Equipment Manufacturer's Written Statement	DOCUMENT	NHT_MOTOR_VEHICLE_EQUIP_MANUF	NHT05	NO METADATA LISTED
NHT	Declaration Form HS-7	FORM	NHT_HS_7	NHT06	The use of this document in DIS is limited to entries for over-the-counter processing (Non-ABI submission) where PGA Message set data is otherwise required.

Agency Code	Official Document Name/Description	Document Type	Document Label Value Use to Submit document via XML to DIS “enumDocumentLabel” enumeration value (CommonData.xsd)	DocCode	Metadata/Comments (O = Optional)
National Marine Fisheries Service (NMFS)					
NMF	NOAA 370 PKG Includes: - Fisheries Certificate of Origin (NOAA Form 370), - Attachment To Fisheries Certificate of Origin (370) – Captain’s Statement, - Attachment to Fisheries Certificate of Origin (370) – Observer’s Statement, and - Attachment to Fisheries Certificate of Origin (370) – International Dolphin Conservation Program (IDCP) Member Nation Certification)	CERTIFICATE	NMF_NOAA_370_FCO_PKG	NMF01	Entry Date – O Importer of Record – O HTS Number – O
NMF	Toothfish Import Approval Form (also called Approval Action of Catch Documents for Toothfish Imports (aka Toothfish pre-approval)	FORM	NMF_TOOTHFISH_PRE_APPROVAL	NMF02	HTS Number – O Approval Number – O Importer of Record – O Permit Number – O
NMF	Dissostichus Catch Document	DOCUMENT	NMF_DISSOSTICHUS_CATCH	NMF03	NO METADATA LISTED
NMF	Dissostichus Re-Export Document	DOCUMENT	NMF_DISSOSTICHUS_RE_EXPORT	NMF04	NO METADATA LISTED

Agency Code Use to submit document via email to DIS	Official Document Name/Description	Document Type	Document Label Value Use to Submit document via XML to DIS "enumDocumentLabel" enumeration value (CommonData.xsd)	DocCode Use to submit document via email to DIS	Metadata/Comments (O = Optional)
NMF	Permit to Import and Re-Export Antarctic Marine Living Resources	PERMIT	NMF_IMPORT_RE_EXPORT_ANTARTIC_MARINE	NMF05	NO METADATA LISTED
NMF	Reporting Form for Catch Documents Accompanying Fresh, Air-shipped Shipments of Toothfish	FORM	NMF_CATCH_DOCS_ACCOMP_FRESH_AIR_SHIPPED_TOOTHFISH	NMF06	NO METADATA LISTED
NMF	Document removed		Document removed	NMF07	Document removed at the request of PGA
NMF	CCSBT Catch Monitoring Form	FORM	NMF_CCSBT_CATCH_MONITORING	NMF08	NO METADATA LISTED
NMF	CCSBT Re-Export/Export After Landing of Domestic Product Form	FORM	NMF_CCSBT_RE_EXPORT_EXPORT	NMF09	NO METADATA LISTED
NMF	IATTC Bigeye Tuna Statistical Document	DOCUMENT	NMF_IATTC_BIGEYE_TUNA	NMF10	NO METADATA LISTED
NMF	IATTC Bigeye Tuna Re-export Certificate	CERTIFICATE	NMF_IATTC_BIGEYE_TUNA_RE_EXPORT	NMF11	NO METADATA LISTED
NMF	ICCAT Bigeye Tuna Statistical Document	DOCUMENT	NMF_ICCAT_BIGEYE_TUNA_STAT	NMF12	NO METADATA LISTED
NMF	ICCAT Bigeye Tuna Re-export Certificate	CERTIFICATE	NMF_ICCAT_BIGEYE_TUNA_RE_EXPORT	NMF13	NO METADATA LISTED
NMF	ICCAT Bluefin Tuna Catch Document	DOCUMENT	NMF_ICCAT_BLUEFIN_TUNA_CATCH	NMF14	NO METADATA LISTED
NMF	ICCAT Bluefin Tuna Re-export Certificate	CERTIFICATE	NMF_ICCAT_BLUEFIN_TUNA_RE_EXPORT	NMF15	NO METADATA LISTED

Agency Code Use to submit document via email to DIS	Official Document Name/Description	Document Type	Document Label Value Use to Submit document via XML to DIS "enumDocumentLabel" enumeration value (CommonData.xsd)	DocCode Use to submit document via email to DIS	Metadata/Comments (O = Optional)
NMF	ICCAT Swordfish Statistical Document	DOCUMENT	NMF_ICCAT_SWORDFISH_STAT	NMF16	NO METADATA LISTED
NMF	ICCAT Swordfish Re-export Certificate	CERTIFICATE	NMF_ICCAT_SWORDFISH_RE_EXPORT	NMF17	NO METADATA LISTED
NMF	IOTC Bigeye Tuna Statistical Document	DOCUMENT	NMF_IOTC_BIGEYE_TUNA_STAT	NMF18	NO METADATA LISTED
NMF	IOTC Bigeye Tuna Re-export Certificate	CERTIFICATE	NMF_IOTC_BIGEYE_TUNA_RE_EXPORT	NMF19	NO METADATA LISTED
NMF	United States Bluefin Tuna Catch Document	DOCUMENT	NMF_US_BLUEFIN_TUNA_CATCH	NMF20	NO METADATA LISTED
NMF	Document removed		Document removed	NMF21	Document removed at the request of PGA
NMF	Dissostichus Catch Document – CCAMLR	DOCUMENT	NMF DISSOSTICHUS_CATCH_CCAMLR	NMF22	NO METADATA LISTED
Office of Marine Conservation (OMC)					
OMC	Shrimp Exporter's/Importer's Declaration DS-2013	DECLARATION	OMC_DS_2013	OMC01	NO METADATA LISTED
Office of Textiles and Apparel (OTEXA)					
OTX	OTEXA Dominican Republic Earned Import Allowance Program Import Approval Certificate	CERTIFICATE	OTX_DR_EARNED_IMPORT_ALLOWANCE	OTX01	NO METADATA LISTED



Agency Code	Official Document Name/Description	Document Type	Document Label Value Use to Submit document via XML to DIS “enumDocumentLabel” enumeration value (CommonData.xsd)	DocCode Use to submit document via email to DIS	Metadata/Comments (O = Optional)
OTX	OTEXA Haiti Earned Import Allowance Program Import Approval Certificate	CERTIFICATE	OTX_HAITI_EARNED_IMPORT_ALLOWANCE	OTX02	NO METADATA LISTED
Office of U.S. Trade Representative (TRP)					
TRP	Certificate Inward Processing Regime (IPR) Exports of Pasta to the USA	CERTIFICATE	TRP_P1_PASTA_CERTIFICATE	TRP01	NO METADATA LISTED
TRP	Certificate for the Export of Pasta to the USA	CERTIFICATE	TRP_P2_PASTA_CERTIFICATE	TRP02	NO METADATA LISTED
Alcohol and Tobacco Tax and Trade (TTB)					
TTB	Certificates of Age, Origin, Identity, Non-Standard Fill, and Statements of Process	CERTIFICATE	TTB_AGE_ORIGIN_IDENTITY_NON_STANDAR D_FILL	TTB01	NO METADATA LISTED
TTB	Certificate of Label/Bottle Approval	CERTIFICATE	TTB_5100_31_LABEL_BOTTLE_APPROVAL	TTB02	NO METADATA LISTED
TTB	Notice of Release of Tobacco Products, Cigarette Papers, or Cigarette Tube	DOCUMENT	TTB_5200_11_NOTICE_OF_RELEASE	TTB03	NO METADATA LISTED.
TTB	Transfer Record and Package Gauge Record	DOCUMENT	TTB_TRANSFER_RECORD	TTB04	NO METADATA LISTED

Agency Code Use to submit document via email to DIS	Official Document Name/Description	Document Type	Document Label Value Use to Submit document via XML to DIS "enumDocumentLabel" enumeration value (CommonData.xsd)	DocCode Use to submit document via email to DIS	Metadata/Comments (O = Optional)
TTB	Spirits for Use in the U.S.	DOCUMENT	TTB_SPIRITS_FOR_USE_IN_US	TTB05	NO METADATA LISTED
TTB	Basic Permit	PERMIT	TTB_BASIC_PERMIT	TTB06	NO METADATA LISTED
<i>Common Documents NOT Owned by any Particular Agency (COM)</i>					
COM	Ingredients List	LIST	INGREDIENTS_LIST	COM01	Commodity Description – O HTS – O
COM	Safety Construction Certificate	CERTIFICATE	SOLAS_1	COM02	CERTIFICATE_NUMBER – M ISSUE_DATE – M EXPIRATION_DATE – M
COM	Safety Equipment Certificate	CERTIFICATE	SOLAS_2	COM03	CERTIFICATE_NUMBER – M ISSUE_DATE – M EXPIRATION_DATE – M
COM	Radio Certificate	CERTIFICATE	SOLAS_3	COM04	CERTIFICATE_NUMBER – M ISSUE_DATE – M EXPIRATION_DATE – M
COM	Dangerous Goods Compliance	DOCUMENT	SOLAS_4	COM05	CERTIFICATE_NUMBER – M ISSUE_DATE – M EXPIRATION_DATE – M
COM	Ship Security	DOCUMENT	SOLAS_5	COM06	CERTIFICATE_NUMBER – M ISSUE_DATE – M EXPIRATION_DATE – M

Agency Code Use to submit document via email to DIS	Official Document Name/Description	Document Type	Document Label Value Use to Submit document via XML to DIS "enumDocumentLabel" enumeration value (CommonData.xsd)	DocCode Use to submit document via email to DIS	Metadata/Comments (O = Optional)
COM	Safety Management Certificate	CERTIFICATE	SOLAS_6	COM07	CERTIFICATE_NUMBER – M ISSUE_DATE – M EXPIRATION_DATE – M
COM	Load Line Certificate	CERTIFICATE	LL	COM08	CERTIFICATE_NUMBER – M ISSUE_DATE – M EXPIRATION_DATE – M
COM	Registry/Certificate of Nationality	CERTIFICATE	REG	COM09	CERTIFICATE_NUMBER – M ISSUE_DATE – M
COM	Tonnage Certificate	CERTIFICATE	TON	COM10	CERTIFICATE_NUMBER – M GROSS_TONNAGE – M NET_TONNAGE – M ISSUE_DATE – M
COM	Certificate of Financial Responsibility (Passenger Death/Injury)	CERTIFICATE	COFR	COM11	CERTIFICATE_NUMBER – M ISSUE_DATE – M EXPIRATION_DATE – M
COM	Document removed		Document removed	COM12	Document removed at the request of CBP
COM	Continuous Synopsis Record	DOCUMENT	CSR	COM13	ISSUE_DATE – M
COM	Certificate of Financial Responsibility (Passenger	CERTIFICATE	COFR_PT1	COM14	CERTIFICATE_NUMBER – M ISSUE_DATE – M



Agency Code Use to submit document via email to DIS	Official Document Name/Description	Document Type	Document Label Value Use to Submit document via XML to DIS “enumDocumentLabel” enumeration value (CommonData.xsd)	DocCode Use to submit document via email to DIS	Metadata/Comments (O = Optional)
	Transportation Indemnification)				
COM	Certificate of Documentation	CERTIFICATE	COD	COM15	CERTIFICATE_NUMBER – M ISSUE_DATE – M EXPIRATION_DATE – M
Customs and Border Protection (CBP)					
CBP	Packing List	LIST	PACKING_LIST	CBP01	Importer – O Consignee – O Commercial Invoice No-O Shipper – O Entry Line Data – O Container Number – O Purchase Order No – O Filer Reference No – O
CBP	Commercial Invoice	INVOICE	COMMERCIAL_INVOICE	CBP02	Importer – O Consignee – O Commercial Invoice No-O Line Number – O Buyer – O Seller – O Manufacturer ID – O Foreign Port of Lading-O HTS Number – O Country of Origin – O Filer Reference No - O
CBP	Other	OTHER	OTHER	CBP03	NO METADATA LISTED



Agency Code Use to submit document via email to DIS	Official Document Name/Description	Document Type	Document Label Value Use to Submit document via XML to DIS "enumDocumentLabel" enumeration value (CommonData.xsd)	DocCode Use to submit document via email to DIS	Metadata/Comments (O = Optional)
CBP	Passport, D/L, Govt Issued ID	ID	PASSPORT_DL_GOVТ_ISSUED_ID	CBP04	NO METADATA LISTED
CBP	CBPF3299 (Declaration for Free Entry of Unaccompanied Articles)	DECLARATION	CBPF_3299	CBP05	NO METADATA LISTED
CBP	CBPF4455 (Certificate of Registration)	CERTIFICATE	CBPF_4455	CBP06	NO METADATA LISTED
CBP	CBPF4457 (Certificate of Registration for Personal Effects Taken Abroad)	CERTIFICATE	CBPF_4457	CBP07	NO METADATA LISTED
CBP	CBPF3229 (Certificate of Origin)	CERTIFICATE	CBPF_3229	CBP08	NO METADATA LISTED
CBP	Vehicle Title, Certificates	CERTIFICATE	VEHICLE_TITLE_CERTIFICATES	CBP09	NO METADATA LISTED
CBP	Permit	PERMIT	PERMIT	CBP10	NO METADATA LISTED
CBP	Bill of Lading	DOCUMENT	BILL_OF_LADING	CBP11	NO METADATA LISTED
CBP	Invoice Worksheet	INVOICE	INVOICE_WORKSHEET	CBP12	Entry Line Number – O Invoice Number – O Invoice Line No – O Filer Reference No - O
CBP	Proforma Invoice	INVOICE	PROFORMA_INVOICE	CBP13	NO METADATA LISTED
CBP	Non-commercial Invoice	INVOICE	NON_COMMERCIAL_INVOICE	CBP14	NO METADATA LISTED
CBP	Licensee Agreement	AGREEMENT	LICENSEE_AGREEMENT	CBP15	NO METADATA LISTED
CBP	Licensing Agreement	AGREEMENT	LICENSING_AGREEMENT	CBP16	NO METADATA LISTED
CBP	Maintenance Agreement	AGREEMENT	MAINTENANCE_AGREEMENT	CBP17	NO METADATA LISTED
CBP	Service Agreement	AGREEMENT	SERVICE_AGREEMENT	CBP18	NO METADATA LISTED
CBP	Serial Numbers (Document)	DOCUMENT	SERIAL_NUMBERS	CBP19	NO METADATA LISTED
CBP	Entry Summary Package	DOCUMENT	ENTRY_SUMMARY_PACKAGE	CBP20	NO METADATA LISTED



Agency Code Use to submit document via email to DIS	Official Document Name/Description	Document Type	Document Label Value Use to Submit document via XML to DIS "enumDocumentLabel" enumeration value (CommonData.xsd)	DocCode Use to submit document via email to DIS	Metadata/Comments (O = Optional)
CBP	ADCVD	OTHER	ADCVD	CBP21	FOR CEEs USE ONLY
CBP	Cancellation	OTHER	CANCELLATION	CBP22	FOR CEEs USE ONLY
CBP	Census	OTHER	CENSUS	CBP23	FOR CEEs USE ONLY
CBP	Docs Required	OTHER	DOCS_REQUIRED	CBP24	FOR CEEs USE ONLY
CBP	CBPF4647 Notice to Mark and/or Notice to Redeliver	FORM	CBPF_4647	CBP25	NO METADATA LISTED
CBP	CBPF28 Request for Information	FORM	CBPF_28	CBP26	FOR CEEs USE ONLY
CBP	CBPF29 Notice of Action	FORM	CBPF_29	CBP27	FOR CEEs USE ONLY
CBP	General Inquiry	OTHER	GENERIC_DOCUMENT	CBP28	FOR CEEs USE ONLY
CBP	Post Entry Amendment	FORM	PEA	CBP29	FOR CEEs USE ONLY
CBP	Prior Disclosure - Letter	DOCUMENT	PRIOR_DISCLOSURE_LETTER	CBP30	FOR CEEs USE ONLY
CBP	Document Removed		Document Removed	CBP31	Document removed at the request of CBP Policy
CBP	Reject	FORM	REJECT	CBP32	FOR CEEs USE ONLY
CBP	Post Consolidated Correction	FORM	PCC	CBP33	NO METADATA LISTED
CBP	Document Removed		Document Removed	CBP34	Document removed at the request of CBP Policy
CBP	CAS Number	OTHER	CAS_NUMBER	CBP35	FOR CEEs USE ONLY
CBP	Generic Document	GENERAL	GENERIC_DOCUMENT	CBP36	NO METADATA LISTED

Agency Code Use to submit document via email to DIS	Official Document Name/Description	Document Type	Document Label Value Use to Submit document via XML to DIS "enumDocumentLabel" enumeration value (CommonData.xsd)	DocCode Use to submit document via email to DIS	Metadata/Comments (O = Optional)
CBP	Photos or Image (of maintenance agreements, UPC's, Bar Codes, Serial Numbers, Product, outer cartons with markings, container being loaded showing cartons and/or seal)	GENERAL	PHOTO_OR_IMAGE	CBP37	NO METADATA LISTED
CBP	Document Removed		Document Removed	CBP38	Document removed at the request of CBP/Office of Finance
CBP	ISF Bond (Type 16)	BOND	ISF_BOND_TYPE_16	CBP39	ISF Transaction No – O Port Code – O Surety Code – O Agent ID No – O Importer No – O Bond Type – O Bond Amount – O Filer Reference No - O
CBP	Application for Allowance in Duties	DOCUMENT	APPL_FOR_ALLOWANCE_IN_DUTIES	CBP40	NO METADATA LISTED
CBP	Cost Submission	DOCUMENT	COST_SUBMISSION	CBP41	NO METADATA LISTED
CBP	Delivery Certificate for Purposes of Drawback	CERTIFICATE	DELIVERY_CERT_FOR_PURPOSES_OF_DRAWBACK	CBP42	NO METADATA LISTED
CBP	Declaration for Free Entry of Returned American Products	DECLARATION	FREE_ENTRY_OF_RETURNED_AMERICAN_PRODUCT	CBP43	NO METADATA LISTED



Agency Code Use to submit document via email to DIS	Official Document Name/Description	Document Type	Document Label Value Use to Submit document via XML to DIS "enumDocumentLabel" enumeration value (CommonData.xsd)	DocCode Use to submit document via email to DIS	Metadata/Comments (O = Optional)
CBP	Document removed		Document removed	CBP44	Document removed at the request of CBP Policy
CBP	CLFTA Certification of Origin	CERTIFICATE	CLFTA_CERT_OF_ORIGIN	CBP45	NO METADATA LISTED
CBP	SGFTA Certification of Origin	CERTIFICATE	SGFTA_CERT_OF_ORIGIN	CBP46	NO METADATA LISTED
CBP	AUFTA Certification of Origin	CERTIFICATE	AUFTA_CERT_OF_ORIGIN	CBP47	NO METADATA LISTED
CBP	ILFTA Joint Committee Certification	CERTIFICATE	ILFTA_JOINT_COMMITTEE_CERT	CBP48	NO METADATA LISTED
CBP	MAFTA Declaration	DECLARATION	MAFTA_DECLARATION	CBP49	NO METADATA LISTED
CBP	BHFTA Declaration	DECLARATION	BHFTA_DECLARATION	CBP50	NO METADATA LISTED
CBP	JOFTA Declaration	DECLARATION	JOFTA_DECLARATION	CBP51	NO METADATA LISTED
CBP	OMFTA Declaration	DECLARATION	OMFTA_DECLARATION	CBP52	NO METADATA LISTED
CBP	PETPA Certification of Origin	CERTIFICATE	PETPA_CERT_OF_ORIGIN	CBP53	NO METADATA LISTED
CBP	PATPA Certificate of Origin	CERTIFICATE	PATPA_CERT_OF_ORIGIN	CBP54	NO METADATA LISTED
CBP	KORUS Certification of Origin	CERTIFICATE	KORUS_CERT_OF_ORIGIN	CBP55	NO METADATA LISTED
CBP	COTPA Certification of Origin	CERTIFICATE	COTPA_CERT_OF_ORIGIN	CBP56	NO METADATA LISTED
CBP	HOPE Declaration of Compliance	DECLARATION	HOPE_DECL_OF_COMPLIANCE	CBP57	NO METADATA LISTED
CBP	IP Declaration	DECLARATION	IP_DECLARATION	CBP58	NO METADATA LISTED
CBP	GSP Declaration	DECLARATION	GSP_DECLARATION	CBP59	NO METADATA LISTED
CBP	CBERA CBI Declaration (Textiles)	DECLARATION	CBERA_CBI_DECL_TEXTILES	CBP60	NO METADATA LISTED
CBP	CAA FAA Certification	CERTIFICATE	CAA_FAA_CERT	CBP61	NO METADATA LISTED



Agency Code Use to submit document via email to DIS	Official Document Name/Description	Document Type	Document Label Value Use to Submit document via XML to DIS "enumDocumentLabel" enumeration value (CommonData.xsd)	DocCode Use to submit document via email to DIS	Metadata/Comments (O = Optional)
CBP	NAFTA Certificate of Origin	CERTIFICATE	NAFTA_CERT_OF_ORIGIN	CBP62	NO METADATA LISTED
CBP	NAFTA Verification of Origin Questionnaire	DOCUMENT	NAFTA_VERIF_OF_ORIGIN	CBP63	NO METADATA LISTED
CBP	NAFTA Motor Vehicle Averaging Election	DOCUMENT	NAFTA_MOTOR_VEHICLE_AVERAGING_ELECTION	CBP64	NO METADATA LISTED
CBP	AGOA Declaration	DECLARATION	AGOA_DECLARATION	CBP65	NO METADATA LISTED
CBP	CBTPA Certificate of Origin	CERTIFICATE	CBTPA_CERT_OF_ORIGIN	CBP66	NO METADATA LISTED
CBP	CAFTA-DR Certification of Origin	CERTIFICATE	CAFTA_DR_CERT_OF_ORIGIN	CBP67	NO METADATA LISTED
CBP	Steel Import License	LICENSE	STEEL_IMPORT_LICENSE	CBP68	NO METADATA LISTED
CBP	AGOA Textile Visa	VISA	AGOA_TEXTILE_VISA	CBP69	NO METADATA LISTED
CBP	Sugar Certificate of Eligibility	CERTIFICATE	SUGAR_CERT_OF_ELIGIBILITY	CBP70	NO METADATA LISTED
CBP	Beef Export Certificate	CERTIFICATE	BEEF_EXPORT	CBP71	NO METADATA LISTED
CBP	NAFTA CA Textile Certificate of Eligibility	CERTIFICATE	NAFTA_CA_TEXTILE_CERT_OF_ELIGIBILITY	CBP72	NO METADATA LISTED
CBP	NAFTA MX Textile Certificate of Eligibility	CERTIFICATE	NAFTA_MX_TEXTILE_CERT_OF_ELIGIBILITY	CBP73	NO METADATA LISTED
CBP	Application and Approval to Manipulate, Examine, Sample or Transfer Goods	DOCUMENT	APPL_APPR_TO_MANIPULATE_SAMPLE_TRANSFER	CBP74	NO METADATA LISTED
CBP	Duty Free Entry Certificate (9808.00.30009 HTS)	CERTIFICATE	DUTY_FREE_ENTRY	CBP75	NO METADATA LISTED
CBP	Informal for vessel repairs, parts and equipment	DOCUMENT	INFORMAL_FOR_VESSEL_REPAIRS_PARTS_EQUIP	CBP76	NO METADATA LISTED
CBP	Declaration of artist, seller, or shipper, curator, etc.	DECLARATION	DECL_OF_ARTIST_SELLER_SHIPPER_CURATOR	CBP77	NO METADATA LISTED



Agency Code Use to submit document via email to DIS	Official Document Name/Description	Document Type	Document Label Value Use to Submit document via XML to DIS "enumDocumentLabel" enumeration value (CommonData.xsd)	DocCode Use to submit document via email to DIS	Metadata/Comments (O = Optional)
CBP	Declaration by institution	DECLARATION	DECLARATION_BY_INSTITUTION	CBP78	NO METADATA LISTED
CBP	Declaration by importer	DECLARATION	DECLARATION_BY_IMPORTER	CBP79	NO METADATA LISTED
CBP	Declarations for articles exported and returned	DECLARATION	ARTICLES_EXPORTED_RETURNED	CBP80	NO METADATA LISTED
CBP	Documents for commercial samples, tools, theatrical effects	DOCUMENT	DOCS_FOR_COMMERCIAL_SAMPLES	CBP81	NO METADATA LISTED
CBP	Purebred breeding certificate	CERTIFICATE	PUREBRED_BREEDING	CBP82	NO METADATA LISTED
CBP	Automotive Products certificate	CERTIFICATE	AUTO_PRODUCTS	CBP83	NO METADATA LISTED
CBP	Master records and metal matrices: detailed statement of cost of production	DOCUMENT	MASTER_RECORDS_METAL_MATRICES	CBP84	NO METADATA LISTED
CBP	Declarations for copper fluxing material	DECLARATION	COPPER_FLUXING_MATERIAL	CBP85	NO METADATA LISTED
CBP	Declaration of non-beverage Ethel alcohol, ATF permit	DECLARATION	NON_BEVERAGE_ETHEL_ALCOHOL_ATF_PERMIT	CBP86	NO METADATA LISTED
CBP	Stipulation for government shipments and/or certification for government duty-free entries, etc.	DOCUMENT	STIP_CERT_FOR_GOVT_SHIPMENTS_DUTY_FREE_ENTRIES	CBP87	NO METADATA LISTED
CBP	Report for rescue and relief equipment	DOCUMENT	RESCUE_AND_RELIEF_EQUIP	CBP88	NO METADATA LISTED



Agency Code Use to submit document via email to DIS	Official Document Name/Description	Document Type	Document Label Value Use to Submit document via XML to DIS "enumDocumentLabel" enumeration value (CommonData.xsd)	DocCode Use to submit document via email to DIS	Metadata/Comments (O = Optional)
CBP	PTPA records that importer may have in support of a PTPA claim for preferential tariff treatment, including an importer's certification	DOCUMENT	PTPA_RECORDS	CBP89	NO METADATA LISTED
CBP	Certificate from the U.S. Department of State for visual/auditory materials	CERTIFICATE	US_DEPT_OF_STATE_FOR_VISUAL_AUDITORY_MATERIALS	CBP90	NO METADATA LISTED
CBP	Certificate of importer of crude petroleum	CERTIFICATE	IMPORTER_OF_CRUDE_PETROLEUM	CBP91	NO METADATA LISTED
CBP	Certificate of fresh, chilled, or frozen beef	CERTIFICATE	FRESH_CHILLED_FROZEN_BEEF	CBP92	NO METADATA LISTED
CBP	European Community cheese affidavit	DOCUMENT	EUROPEAN_COMMUNITY_CHEESE_AFFIDAVIT	CBP93	NO METADATA LISTED
CBP	HHS permit for milk or cream importation	PERMIT	HHS_MILK_CREAM_IMPORT	CBP94	NO METADATA LISTED
CBP	Notice of arrival for plant and plant products	DOCUMENT	PLANT_PLANT_PRODUCTS_NOA	CBP95	NO METADATA LISTED
CBP	Certificate of match inspection and importer's declaration	CERTIFICATE	MATCH_INSPECTION	CBP96	NO METADATA LISTED
CBP	Certificate of origin/declarations for goods made by forced labor, etc.	CERTIFICATE	GOODS_MADE_BY_FORCED_LABOR	CBP97	NO METADATA LISTED
CBP	Boat declarations (CG-5096) and USCG exemption	DECLARATION	BOAT_USCG_EXEMPT	CBP98	NO METADATA LISTED



Agency Code Use to submit document via email to DIS	Official Document Name/Description	Document Type	Document Label Value Use to Submit document via XML to DIS "enumDocumentLabel" enumeration value (CommonData.xsd)	DocCode Use to submit document via email to DIS	Metadata/Comments (O = Optional)
CBP	Declarations for switchblade knives	DECLARATION	SWITCHBLADE_KNIVES	CBP99	NO METADATA LISTED
CBP	Cultural property declarations, statements and certificates of origin	DECLARATION	CULTURAL_PROPERTY	CBP100	NO METADATA LISTED
CBP	Pre-Columbian monumental and architectural sculpture and murals - Certificate of legal exportation; Evidence of exemption	CERTIFICATE	LEGAL_EXPORT_EXEMPT	CBP101	NO METADATA LISTED
CBP	Declaration by importer of use of certain metal articles	DECLARATION	USE_OF_CERTAIN_METAL_ARTICLES	CBP102	NO METADATA LISTED
CBP	Re-Melting Certificate	CERTIFICATE	RE_MELTING_CERTIFICATE	CBP103	NO METADATA LISTED
CBP	NAFTA textile requirements	DOCUMENT	NAFTA_TEXTILE_REQUIREMENTS	CBP104	NO METADATA LISTED
CBP	Certificate of marking; notice to repacker	CERTIFICATE	MARKING_CERT_REPACKER_NOTICE	CBP105	NO METADATA LISTED
CBP	Documents required for appraisement entry Bills, statements of costs of production Value declaration	DOCUMENT	DOCS_REQUIRED_FOR_APPRAISEMENT	CBP106	NO METADATA LISTED
CBP	9802 import declaration	DECLARATION	9802_IMPORT_DECLARATION	CBP107	NO METADATA LISTED
CBP	9802 assembler declaration	DECLARATION	9802_ASSEMBLER_DECLARATION	CBP108	NO METADATA LISTED



Agency Code Use to submit document via email to DIS	Official Document Name/Description	Document Type	Document Label Value Use to Submit document via XML to DIS "enumDocumentLabel" enumeration value (CommonData.xsd)	DocCode Use to submit document via email to DIS	Metadata/Comments (O = Optional)
CBP	Document removed		Document removed	CBP109	Document removed at the request of CBP Policy
CBP	Drawback Accounts Payable	DOCUMENT	DRAWBACK_ACCOUNTS_PAYABLE	CBP110	NO METADATA LISTED
CBP	Drawback Receiving Reports	DOCUMENT	DRAWBACK_RECEIVING_REPORTS	CBP111	NO METADATA LISTED
CBP	Delivery Records	DOCUMENT	DELIVERY_RECORDS	CBP112	NO METADATA LISTED
CBP	Drawback Inventory Records	DOCUMENT	DRAWBACK_INVENTORY_RECORDS	CBP113	NO METADATA LISTED
CBP	Drawback Inventory Control Records	DOCUMENT	DRAWBACK_INVENTORY_CONTROL_RECORDS	CBP114	NO METADATA LISTED
CBP	Drawback Inventory Turnover Records	DOCUMENT	DRAWBACK_INVENTORY_TURNOVER_RECORDS	CBP115	NO METADATA LISTED
CBP	Drawback Manufacturing Records	DOCUMENT	DRAWBACK_MANUFACTURING_RECORDS	CBP116	NO METADATA LISTED
CBP	Drawback Sales Order/Contract	DOCUMENT	DRAWBACK_SALES_ORDER_CONTRACT	CBP117	NO METADATA LISTED

Agency Code Use to submit document via email to DIS	Official Document Name/Description	Document Type	Document Label Value Use to Submit document via XML to DIS "enumDocumentLabel" enumeration value (CommonData.xsd)	DocCode Use to submit document via email to DIS	Metadata/Comments (O = Optional)
CBP	Drawback Finished Goods Inventory	DOCUMENT	DRAWBACK_FINISHED_GOODS_INVENTORY	CBP118	NO METADATA LISTED
CBP	Drawback Export Invoice	INVOICE	DRAWBACK_EXPORT_INVOICE	CBP119	NO METADATA LISTED
CBP	Drawback Accounts Receivable	DOCUMENT	DRAWBACK_ACCOUNTS_RECEIVABLE	CBP120	NO METADATA LISTED
CBP	Drawback Production Exhibit	DOCUMENT	DRAWBACK_PRODUCTION_EXHIBIT	CBP121	NO METADATA LISTED
CBP	CBPF 214 Application for Foreign Trade Zone Admission and/or Status Designation Continuation Sheet	FORM	CBPF_214_APPLICATION_FOR_FTZ	CBP122	NO METADATA LISTED This document should only be submitted to DIS to prove that goods went into a foreign trade zone (FTZ) for drawback claim filing purposes. This document should not be submitted to DIS if filing an application to put goods into an FTZ.
CBP	Drawback 1313(p) Certification	CERTIFICATE	DRAWBACK_1313P_CERTIFICATION	CBP123	NO METADATA LISTED
CBP	CBPF 7514 Drawback Notice (Lading/FTZ Transfer) or Master Declaration	FORM	CBPF_7514_DRAWBACK_NOTICE	CBP124	NO METADATA LISTED

Agency Code Use to submit document via email to DIS	Official Document Name/Description	Document Type	Document Label Value Use to Submit document via XML to DIS "enumDocumentLabel" enumeration value (CommonData.xsd)	DocCode Use to submit document via email to DIS	Metadata/Comments (O = Optional)
CBP	Drawback 1313(b)(p) Certification	CERTIFICATE	DRAWBACK_1313BP_CERTIFICATION	CBP125	NO METADATA LISTED
CBP	Drawback Oil Spill Certification	CERTIFICATE	DRAWBACK_OIL_SPILL_CERTIFICATION	CBP126	NO METADATA LISTED
CBP	Drawback 5062(c) Certification	CERTIFICATE	DRAWBACK_5062C_CERTIFICATION	CBP127	NO METADATA LISTED
CBP	CBPF 7553 Notice of Intent to Export or Destroy for Purposes of Drawback (NOI)	FORM	CBPF_7553_NOTICE_OF_INTENT	CBP128	NO METADATA LISTED
CBP	Drawback Proof of Exports	DOCUMENT	DRAWBACK_PROOF_OF_EXPORTS	CBP129	NO METADATA LISTED
CBP	Drawback Business Records - Lab Report	DOCUMENT	DRAWBACK_BUSINESS_RECORDS_LAB_REPORT	CBP130	NO METADATA LISTED
CBP	Drawback Business Records - Certificate of Analysis	CERTIFICATE	DRAWBACK_CERTIFICATE_OF_ANALYSIS	CBP131	NO METADATA LISTED
CBP	Drawback Export Waiver / Endorsement Waiver	DOCUMENT	DRAWBACK_EXPORT_WAIVER	CBP132	NO METADATA LISTED
CBP	Drawback CID Approval Letter from HQ or Port	LETTER	DRAWBACK_CID_APPROVAL_LETTER	CBP133	NO METADATA LISTED

Agency Code Use to submit document via email to DIS	Official Document Name/Description	Document Type	Document Label Value Use to Submit document via XML to DIS "enumDocumentLabel" enumeration value (CommonData.xsd)	DocCode Use to submit document via email to DIS	Metadata/Comments (O = Optional)
CBP	Royalty Agreement	AGREEMENT	ROYALTY_AGREEMENT	CBP134	NO METADATA LISTED
CBP	Drawback CID Supporting Document	DOCUMENT	DRAWBACK_CID_SUPPORTING_DOCUMENT	CBP135	NO METADATA LISTED
CBP	Drawback CID Application	DOCUMENT	DRAWBACK_CID_APPLICATION	CBP136	NO METADATA LISTED
CBP	Drawback NAFTA Coding Sheet	DOCUMENT	DRAWBACK_NAFTA_CODING_SHEET	CBP137	Document removed at the request of CBP Policy
CBP	Drawback One Time Waiver (OTW) Approval Letter	LETTER	DRAWBACK_OTW_APPROVAL_LETTER	CBP138	NO METADATA LISTED
CBP	Drawback 1313(c) Documents and Certification(s)	DOCUMENT	DRAWBACK_1313C_DOCUMENT	CBP139	NO METADATA LISTED



APPENDIX B: General Guidelines for Documents Submitted to DIS via Email

These **general guidelines** are for all document submissions via email except for Export Manifest and Vessel Documents. Vessel document submission may be found in APPENDIX C of this document, and Export Manifest submission guidelines may be found at <http://www.cbp.gov/trade/ace/export-manifest>

Send email to: docs@cbp.dhs.gov
Email Subject Line: CAT=GEN; ENTRY_NBR=12345678; FILER_CD=ABC; ACTION=ADD, DELETE, or REPLACE (NOTE: use 'ENTRY_NBR and FILER_CD' for Drawback Claim Number)
OR
CAT=GEN; BOL_NBR=123456789100; SCAC=ABCD; ACTION=ADD, DELETE, or REPLACE
OR
CAT=GEN; ITN=X12345678910111; ACTION= ADD, DELETE, or REPLACE
OR
CAT=GEN; ADMISSION_NBR=153000117XX023235; ACTION= ADD, DELETE, or REPLACE

NOTE 1:

CAT must always equal **GEN** (for General) at this time. Additional categories shall be specified in DIS implementations guides as they are published over time.

Attachments: File Naming convention = DocCode-AnyFileName.pdf

NOTE 2:

DocCode is a unique code assigned by CBP for each Document supported in DIS. Please see Appendix A for the list of Supported Documents and their Specific Metadata Validations. EXAMPLE: **CBP01-EntryABC12345678Invoice.pdf**

Body:

START_DATA

AGENCY_CD=Mandatory (Trade must identify owning agency. If more than one agency needs to review the document(s), identify multiple agencies, separated by semi-colon (ex. ABC;DEF;XYZ). Please find all agency codes at <http://www.cbp.gov/document/guidance/appendix-v-government-agency-codes>). (Note: COM indicates 'COMMON', i.e. Common Documents NOT Owned by any *Particular* Agency).

TRANSMITTER_FILER_CD=Conditional (Required for Filers with valid filer codes)

TRANSMITTER_NAME=Mandatory (Name of company)

CENTER_TEAM=TEAM_ABC Conditional (Required when responding to CEEs)

PORT_CD = (4 digit port code) Conditional (Required when responding to CEEs)

IOR_NBR = Conditional (Required when responding to CEEs)

ACE_ACTION_ID = Conditional (Required at time of Post Release)

LICENSE_OR_PERMIT_NBR=Conditional (Required when submitting a license or DEA01)

TRANSACTION_IDENTIFICATION_NBR= Conditional (Required for DEA02-DEA04)

HOUSE_BOL_NBR=Conditional (Required when sending Master BOL in subject line)

BROKER_REF_NBR=Optional (For future use)

POC_INFO= Optional (Name and Phone Number)

COMMENT=Optional (Any clarification/remark)

RETURN_EMAIL_ADDRESS=Optional (if different than sender email address)

END_DATA

Sender Signature/Company Stationary: (Optional) Company Name, Address, Phone Number

Here is the Auto-response from DIS that the sender will receive upon email submission:

U.S. Customs & Border Protection (CBP) has received your e-mail to the Document Imaging System (DIS) Mailbox for Document Submissions. This auto-reply serves as a confirmation of receipt of your email only. It does not indicate acceptance or correctness of the submitted data or documents. Filers are to keep this e-mail

to facilitate audit and tracking of submitted data and documents. Please report any issues to CBP if you do not receive this auto-response within an hour for every email submission to the DIS mailbox.

NOTE 4:

- Total email size including all attachments must not exceed **10MB**.
- For larger documents please breakup into multiple documents and submit multiple emails for the same Entry or Bill (i.e. send the same email subject line with additional documents).
- Photos/Images should be in an open internet format (jpeg, gif, png). Please do not use TIFFs.
- Documents should be of types pdf, doc, or xls (TIF and TIFF are not accepted).
- Separate the Bill number and the SCAC. Separate the Entry Number and the Filer Code.
- The file name must begin with 'DocCode-' (where DocCode is a unique code for the document)
- Do not leave a space between the "-"(dash) in 'DocCode-'and the rest of the file name.
- Email Responses will be sent to the sender's email address if a return email address is not provided.
- The auto-response message **ONLY** verifies that the email has been received via the email, it does **NOT** indicate that email contents including the document attachments are correct/acceptable.

Note 5: The mandatory/optional conditions for data elements in the email body are given *inside* the email body for convenience. Please see Appendix A for actual validations performed by the system.

APPENDIX C: Guidelines for Vessel Documents Submitted to DIS via Email

These guidelines are for **Vessel document** submissions via email. General document submission may be found in APPENDIX B of this document, and Export Manifest submission guidelines may be found at

<http://www.cbp.gov/trade/ace/export-manifest>

Send email to: docs@cbp.dhs.gov

Email Subject Line: CAT=GEN; IMO_NBR=1234567; ACTION=ADD, DELETE, or REPLACE

OR

CAT=GEN; OFCL_RGSTRN_NBR= (for future use); ACTION=ADD, DELETE, or REPLACE

NOTE 1:

CAT must always equal **GEN** (for General) at this time. Additional categories shall be specified in DIS implementations guides as they are published over time.

Attachments: File Naming convention = DocCode-AnyFileName.pdf

NOTE 2:

DocCode is a unique code assigned by CBP for each Document supported in DIS. Please see Appendix A for the list of Supported Documents and their Specific Metadata Validations. EXAMPLE: COM04-1234567SOLAS3.pdf.

NOTE 3:

Please see APPENDIX-A for any detailed metadata conditional requirements when submitting specific documents. A summary guidance is provided below for quick reference.

Body:

START_DATA

AGENCY_CD=COM (Mandatory - Trade must identify owning agency. If more than one agency needs to review the document(s), identify multiple agencies, separated by semi-colon (ex. ABC;DEF;XYZ). Please find all agency codes at <http://www.cbp.gov/document/guidance/appendix-v-government-agency-codes>). (Note: COM indicates 'COMMON', i.e. Common Documents NOT Owned by any *Particular* Agency).

TRANSMITTER_FILER_CD=Conditional (Required for Filers with valid filer codes)

TRANSMITTER_NAME=Mandatory (Name of company)

SCAC=Conditional (If available, required when submitting IMO documents)

LICENSE_OR_PERMIT_NBR=Conditional (Required when submitting a license)

CERTIFICATE_NUMBER=Mandatory (Required when submitting a Certificate)

ISSUE_DATE=Mandatory (Please see Appendix A for conditions)

EXPIRATION_DATE=Mandatory (Please see Appendix A for conditions)

GROSS_TONNAGE= Conditional (Required when submitting Tonnage Certificate)

NET_TONNAGE= Conditional (Required when submitting Tonnage Certificate)

POC_INFO=Optional (Name and Phone Number)

COMMENT=Optional (Any clarification/remark)

RETURN_EMAIL_ADDRESS=Optional (if different than sender email address)

END_DATA

Sender Signature/Company Stationary: (Optional) Company Name, Address, Phone Number

Here is the Auto-response from DIS that the sender will receive upon email submission:

U.S. Customs & Border Protection (CBP) has received your e-mail to the Document Imaging System (DIS) Mailbox for Document Submissions. This auto-reply serves as a confirmation of receipt of your email only. It does not indicate acceptance or correctness of the submitted data or documents. Filers are to keep this e-mail

to facilitate audit and tracking of submitted data and documents. Please report any issues to CBP if you do not receive this auto-response within an hour for every email submission to the DIS mailbox.

NOTE 4:

- Total email size including all attachments must not exceed **10MB**.
- For larger documents please breakup into multiple documents and submit multiple emails for the same Entry or Bill (i.e. send the same email subject line with additional documents).
- Photos/Images should be in an open internet format (jpeg, gif, png). Please do not use TIFFs.
- Documents should be of types pdf, doc, or xls (TIF and TIFF are not accepted).
- The file name must begin with 'DocCode-' (where DocCode is a unique code for the document)
- Do not leave a space between the "-"(dash) in 'DocCode-'and the rest of the file name.
- Email Responses will be sent to the sender's email address if a return email address is not provided.
- The auto-response message **ONLY** verifies that the email has been received via the email, it does **NOT** indicate that email contents including the document attachments are correct/acceptable.

Note 5: The mandatory/optional conditions for data elements in the email body are given *inside* the email body for convenience. Please see Appendix A for actual validations performed by the system.

APPENDIX D: XSD Enumerated Value Definitions

The enumerated value definitions that appear below have been removed from CommonData.xsd to facilitate maintenance of these lists. Changes to these lists will require an update to the DIS IG only.

XSD Enumerated Value Definitions for MessageHeader – All Transaction Types

```
<xs:simpleType name="enumMessageType">  
  <xs:restriction base="xs:string">  
    <xs:enumeration value="DocumentSubmission"/>  
    <xs:enumeration value="DocumentValidationResponse"/>  
    <xs:enumeration value="DocumentReviewResponse"/>  
  </xs:restriction>  
</xs:simpleType>
```

XSD Enumerated Value Definitions for DocumentSubmissionPackage

```
<xs:simpleType name="enumActionCode">  
  <xs:restriction base="xs:string">  
    <xs:enumeration value="ADD"/>  
    <xs:enumeration value="REPLACE"/>  
    <xs:enumeration value="DELETE"/>  
  </xs:restriction>  
</xs:simpleType>
```

```
<xs:simpleType name="enumTransactionCategory">  
  <xs:restriction base="xs:string">  
    <xs:enumeration value="SINGLE_TXN"/>  
    <xs:enumeration value="CONTINUOUS"/>  
  </xs:restriction>  
</xs:simpleType>
```

XSD Enumerated Value Definitions for DocumentSubmissionPackage (Cont)

```

<xs:simpleType name="enumCBPRequestType">
  <xs:annotation>
    <xs:documentation>Required if referring to a CBP Request </xs:documentation>
  </xs:annotation>
  <xs:restriction base="xs:string">
    <xs:enumeration value="ACEActionNumber"/>
    <xs:enumeration value="ATSDocRequest"/>
    <xs:enumeration value="OtherCBPRequest"/>
  </xs:restriction>
</xs:simpleType>

```

```

<xs:simpleType name="enumFileExtensionType">
  <xs:restriction base="xs:string">
    <xs:enumeration value="PNG"/>
    <xs:enumeration value="JPG"/>
    <xs:enumeration value="JPEG"/>
    <xs:enumeration value="GIF"/>
    <xs:enumeration value="BMP"/>
    <xs:enumeration value="PDF"/>
    <xs:enumeration value="DOC"/>
    <xs:enumeration value="DOCX"/>
    <xs:enumeration value="PPT"/>
  </xs:restriction>
</xs:simpleType>

```

```

<xs:simpleType name="enumInvoiceType">
  <xs:restriction base="xs:string">
    <xs:enumeration value="COMMERCIAL_INVOICE"/>
    <xs:enumeration value="OTHER"/>
  </xs:restriction>
</xs:simpleType>

```

XSD Enumerated Value Definitions for DocumentSubmissionPackage (Cont)

```

<xs:simpleType name="enumTradePartyType">
  <xs:restriction base="xs:string">
    <xs:enumeration value="MANUFACTURER"/>
    <xs:enumeration value="EXPORTER"/>
  </xs:restriction>
</xs:simpleType>

```

```
<xs:enumeration value="IMPORTER"/>
<xs:enumeration value="SHIPPER"/>
<xs:enumeration value="CARRIER"/>
<xs:enumeration value="BROKER"/>
<xs:enumeration value="FILER"/>
<xs:enumeration value="CONSIGNEE"/>
<xs:enumeration value="AGENT"/>
<xs:enumeration value="BUYER"/>
<xs:enumeration value="SELLER"/>
<xs:enumeration value="FACILITATOR"/>
<xs:enumeration value="OTHER"/>
<xs:enumeration value="UNKNOWN"/>
</xs:restriction>
</xs:simpleType>
```



XSD Enumerated Value Definitions for MessageValidationResponse

```
<xs:simpleType name="enumProcessingEvent">  
  <xs:annotation>  
    <xs:documentation>A list of Processing Events in DIS </xs:documentation>  
  </xs:annotation>  
  <xs:restriction base="xs:string">  
    <xs:enumeration value="INITIAL_VALIDATION"/>  
  </xs:restriction>  
</xs:simpleType>
```

```
<xs:simpleType name="enumProcessingStatus">  
  <xs:annotation>  
    <xs:documentation>Required: Possible values for DocumentProcessingStatus. 'PASSED' is  
    sent to Trade once the system receives the document and confirms that basic checks  
    for the elements in the XML look good. 'FAILED' is sent to Trade if the system finds that  
    one or more elements in the XML have an error. </xs:documentation>  
  </xs:annotation>  
  <xs:restriction base="xs:string">  
    <xs:enumeration value="PASSED"/>  
    <xs:enumeration value="FAILED"/>  
  </xs:restriction>  
</xs:simpleType>
```