

Port of Chicago - Pipeline

5600 Pearl Street
Rosemont, Illinois 60618

**U.S. Customs and
Border Protection**



Pipeline 22-09
December 13, 2021

TO: Customs Brokers, Importers and Others Concerned

SUBJECT: Recent Container Thefts in the Chicagoland Area

This pipeline and attached BOLO are being sent to the trade community for informational purposes. Over the past few weeks several containers have been stolen from bonded warehouse yards in the Chicagoland area. Some of these containers held bonded merchandise that was not released by U.S. Customs and Border Protection (CBP). Based on these thefts, it is recommended that facilities increase security accordingly.

Should you have any questions regarding this pipeline, please contact Cargo Supervisor Phillip Simoy at (847) 928-6070.

Sincerely,

A handwritten signature in blue ink, appearing to read "CS Campbell".

Carl S. Campbell

Area Port Director

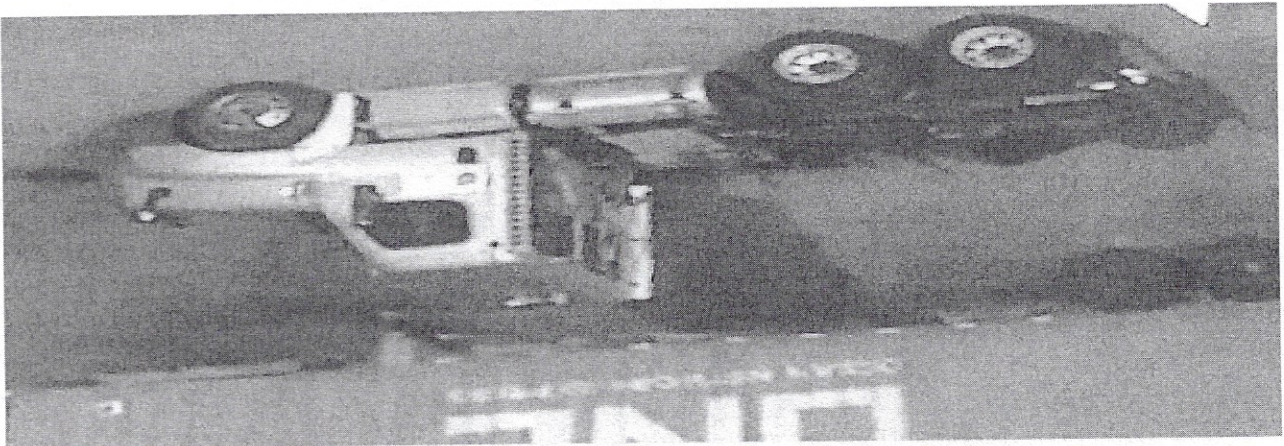
Area Port of Chicago

Attachment

CBP Chicago is providing this information to the trade community to enable local establishments to take proactive steps to protect property.

- Several groups are currently being investigated for burglarizing shipping containers in the Chicago area.
- The following tactics are being used by thieves:
 - Thieves are walking into container yards and looking at container numbers, while checking the seals on containers.
 - Thieves look for containers with metal seals and are targeting high valued items.
- Once a container is identified at a railyard or at a warehouse, burglars will scout the container yard until they see an opportunity to break a container seal and take the merchandise inside or take the entire container.
- Thieves are also knocking on containers to determine if contents exist inside or to determine if the container is empty.
- Once contents are discovered in containers, the burglars contact truck tractors that are standing by to hook-up to containers and subsequently drive off with them.

On November 21, 2021, four containers were targeted and stolen from a bonded warehouse in the Chicago area. Additionally, on November 30, a container was reported stolen from a warehouse. Subsequent investigations by U.S. Customs and Border Protection (CBP), in coordination with the Illinois State Police, revealed the following:



*** FIELD OPERATIONS ***



BOLO Container Thefts

